

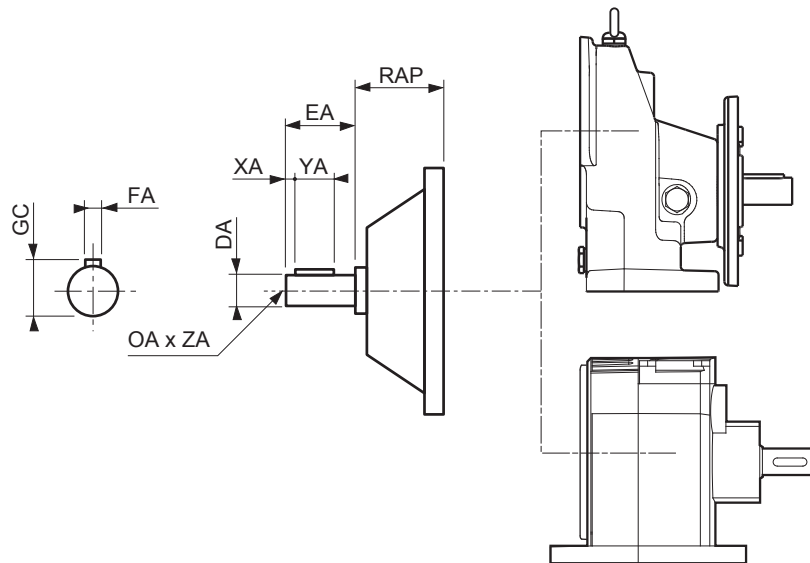
Electromechanical products

Compabloc 3000

Dimensions

Dimensions of the AP input shaft

Dimensions in millimetres



Type	AP								kg
	ØDA	EA	YA	XA	FA	GC	RAP	OAxZA	
Cb38	55k6	110	90	10	16	59	48.5	M20x42	32
Cb37	48k6	110	90	10	14	51.5	51	M16x36	27
Cb36	48k6	110	90	10	14	51.5	51	M16x36	27
Cb35	38j6	80	63	8	10	41	129.5	M12x28	14
Cb34	28j6	60	50	5	8	31	138.5	M10x22	5
Cb33	28j6	60	50	5	8	31	69	M10x22	5
Cb32	24j6	50	40	4.5	8	27	73	M8x19	1.2
Cb31	24j6	50	40	4.5	8	27	73	M8x19	1.5
Cb30	14j6	30	20	3	5	16	69	M5x14	1.3
Cb15	11j7	23	20	-	4	12.5	50.5	M4x10	0.3

Electromechanical products

Compabloc 3000

Dimensions

Dimensions of Compabloc (Cb) gearboxes, MI integral mounting,
Cb 3031

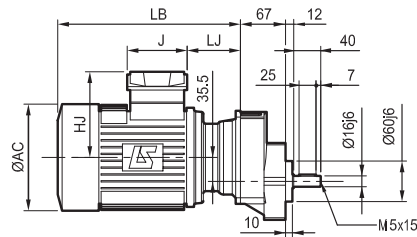
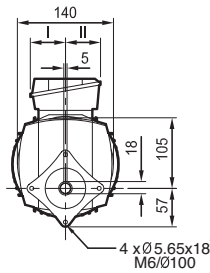
Dimensions in millimetres

- BT faceplate form



Cb: 2.3 kg + Motor

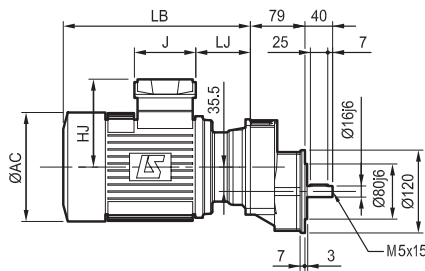
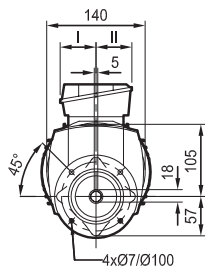
1. for self-tapping screw



- BD1 flange



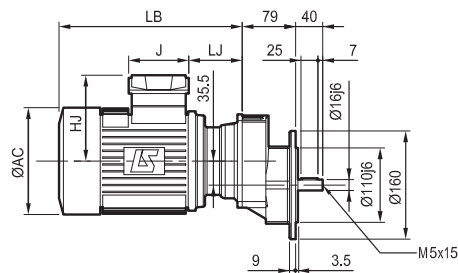
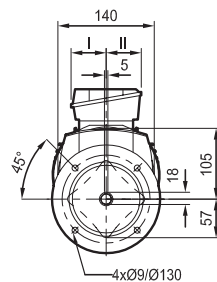
Cb: 2.5 kg + Motor



- BD2 flange



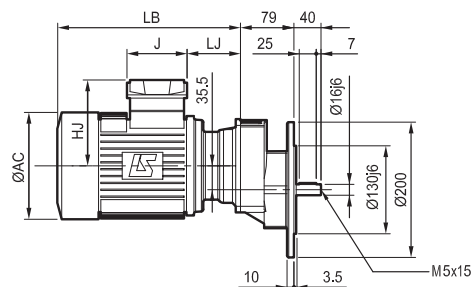
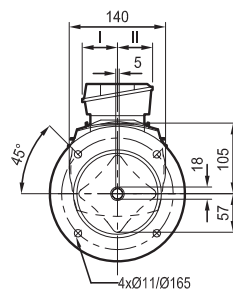
Cb: 2.5 kg + Motor



- BD3 flange



Cb: 2.4 kg + Motor



Electromechanical products


Compabloc 3000

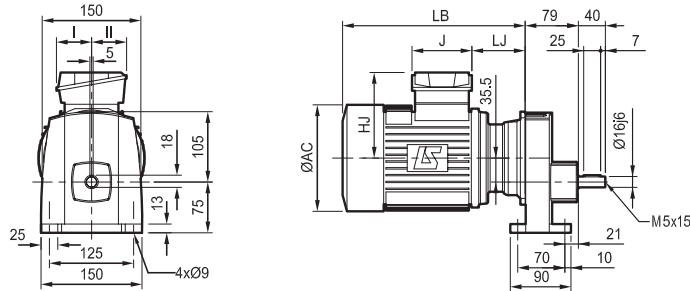
Dimensions

Dimensions of Compabloc (Cb) gearboxes, MI integral mounting, Cb 3031


Dimensions in millimetres

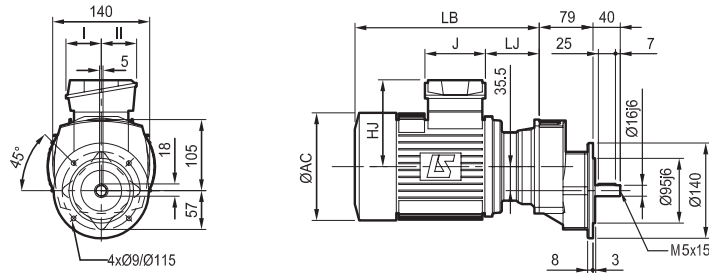
- S foot mounted

 Cb: 2.3 kg + Motor





- Standard BS flange




 Cb: 2.5 kg + Motor





Three-phase 4-pole motors

Fr. size	LSES							 kg	LSES FCR							 kg
	AC	HJ	J	LB	LJ	I	II		AC	HJ	J	LB	LJ	I	II	
LSES 80	170	135	86	309	77	43	43	11.7	172	146	160	349.5	46	55	55	18

Three-phase 4-pole motors

Fr. size	LS							 kg	LS FMD							 kg	LS FCR							 kg
	AC	HJ	J	LB	LJ	I	II		AC	HJ	J	LB	LJ	I	II		AC	HJ	J	LB	LJ	I	II	
LS 56	110	84	86	167	19	43	43	4	110	90	85	217	19	42.5	42.5	4.9	-	-	-	-	-	-	-	-
LS 63	124	89	86	183	29	43	43	5	124	96	85	233	29	42.5	42.5	5.7	-	-	-	-	-	-	-	-
LS 71 L	140	109	86	240	73	43	43	8.3	-	-	-	-	-	-	-	-	140	135	160	268	34	55	55	11.3
LS 80 L	-	-	-	-	-	-	-	-	-	-	-	-	-	-	-	-	172	146	160	300	46	55	55	18

Single-phase 4-pole motors

Fr. size	LS							 kg	LS FMD							 kg
	AC	HJ	J	LB ¹ /LB ²	LJ	I	II		AC	HJ	J	LB ¹ /LB ²	LJ	I	II	
LS 56	110	92	86	167/146	19	90	44	3.5	110	92	86	217/196	18	90	44	4.4
LS 63	124	97	138	183/161	29	100	102.5	5	124	97	138	233/211	29	100	102.5	5.9
LS 71 L	140	107	138	204/166	29	100	102.5	8	140	107	138	244/216	29	100	102.5	8.9

1. ventilated motor.

2. non-ventilated motor.

Electromechanical products

Compabloc 3000

Dimensions

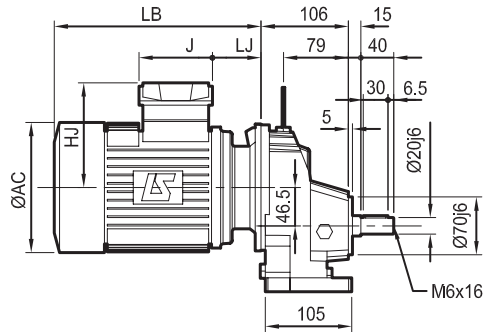
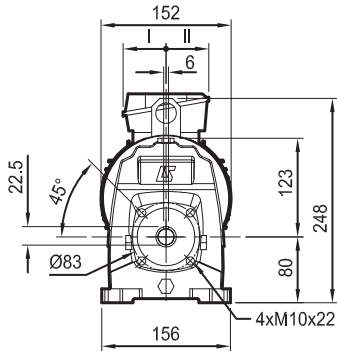
Dimensions of Compabloc (Cb) gearboxes, MI integral mounting,
Cb 3131

Dimensions in millimetres

- BT faceplate form



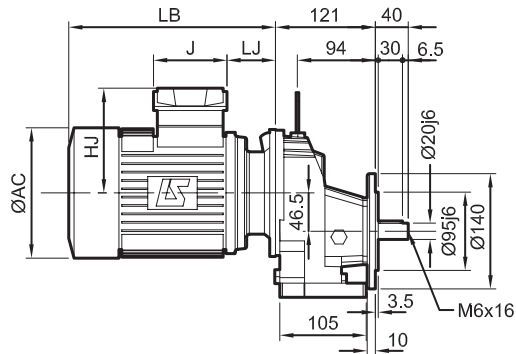
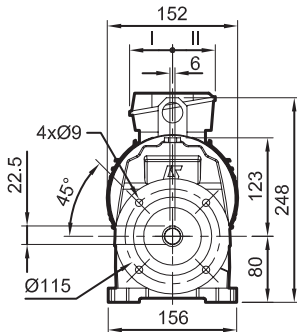
Cb: 6.9 kg + Motor



- BD1 flange



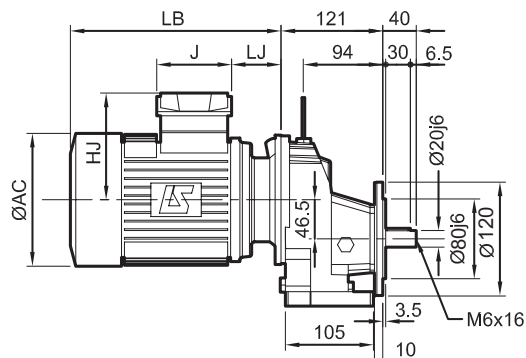
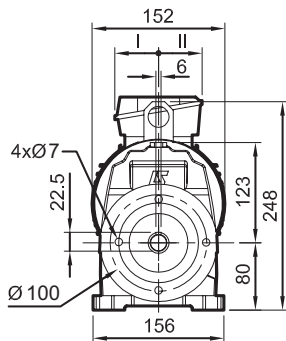
Cb: 7.9 kg + Motor



- BD2 flange



Cb: 7.8 kg + Motor



Electromechanical products


Compabloc 3000

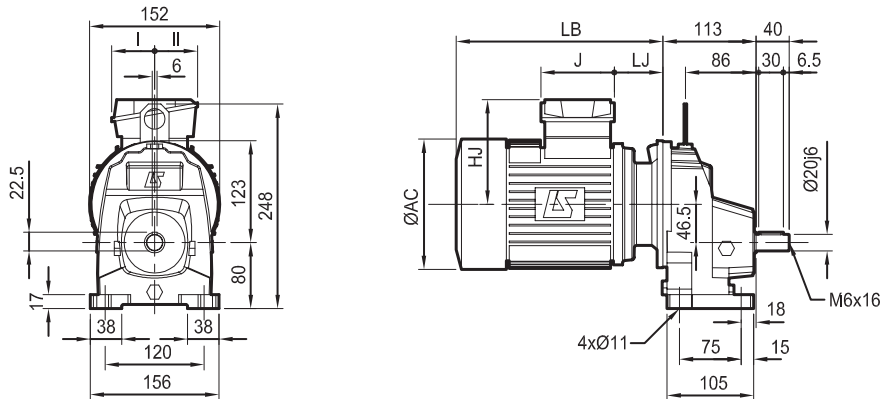
Dimensions

Dimensions of Compabloc (Cb) gearboxes, MI integral mounting,
Cb 3131


Dimensions in millimetres

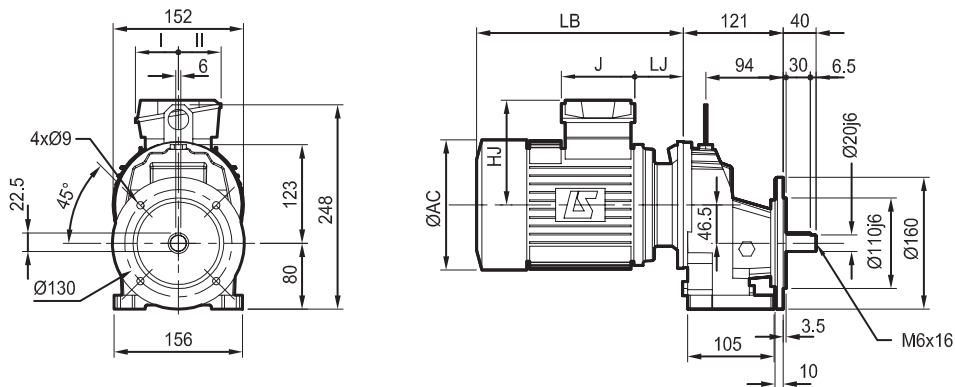
- S foot mounted

 Cb: 6.9 kg + Motor





- Standard BS flange



 Cb: 8.1 kg + Motor



4-pole motors

Fr. size	LSES							 kg	LSES FCR							 kg
	AC	HJ	J	LB	LJ	I	II		AC	HJ	J	LB	LJ	I	II	
LSES 80	170	135	86	288.5	67.5	43	43	11.7	172	146	160	349.5	46	55	55	18
LSES 90	190	135	86	290	71	43	43	15.2	184	156	160	349.5	58.5	55	55	24.2
LSES 100 LR	200	140	86	354.5	72	43	43	25.7	200	161	160	410	59.5	55	55	30

4-pole motors

Fr. size	LS							 kg	LS FCR							 kg
	AC	HJ	J	LB	LJ	I	II		AC	HJ	J	LB	LJ	I	II	
LS 71 L	140	109	86	217	49	43	43	8.3	140	135	160	268	34	55	55	11.3
LS 80 L	-	-	-	-	-	-	-	-	172	146	160	300	46	55	55	18
LS 90 L	-	-	-	-	-	-	-	-	184	156	160	349.5	58.5	55	55	24.2
LS 100 L	-	-	-	-	-	-	-	-	200	161	160	397.5	59.5	55	55	30

Electromechanical products

Compabloc 3000

Dimensions

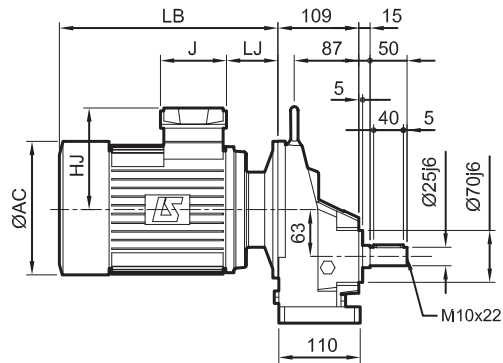
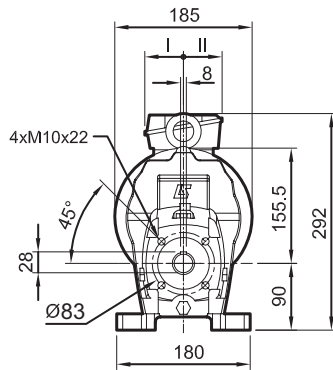
Dimensions of Compabloc (Cb) gearboxes, MI integral mounting,
Cb 3231

Dimensions in millimetres

- BT faceplate form



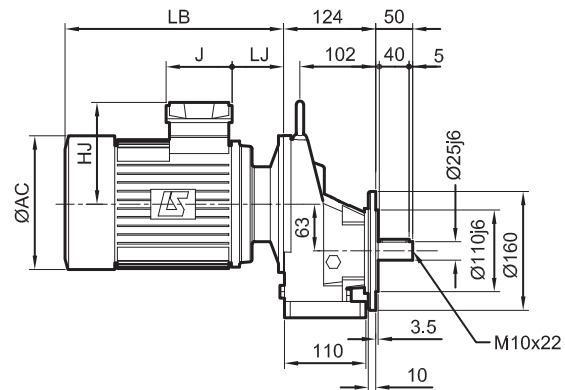
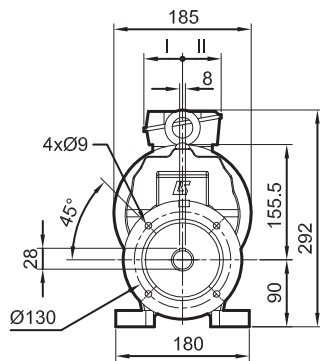
Cb: 8.3 kg + Motor



- BD1 flange



Cb: 9.5 kg + Motor



Electromechanical products


Compabloc 3000

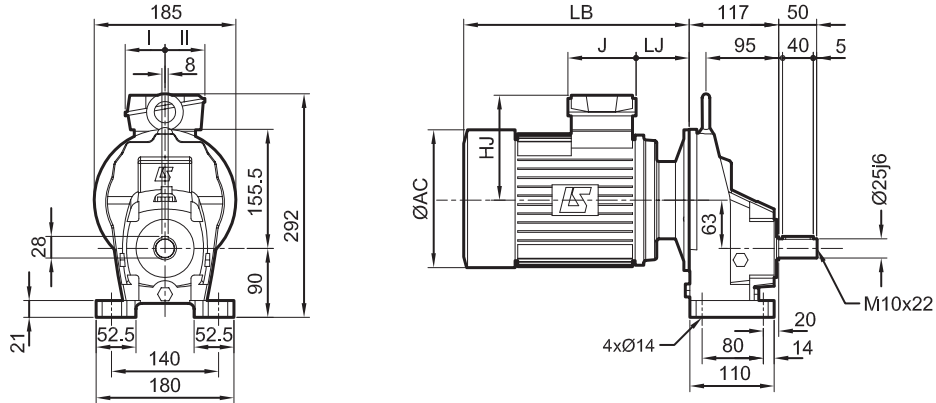
Dimensions

Dimensions of Compabloc (Cb) gearboxes, MI integral mounting,
Cb 3231


Dimensions in millimetres

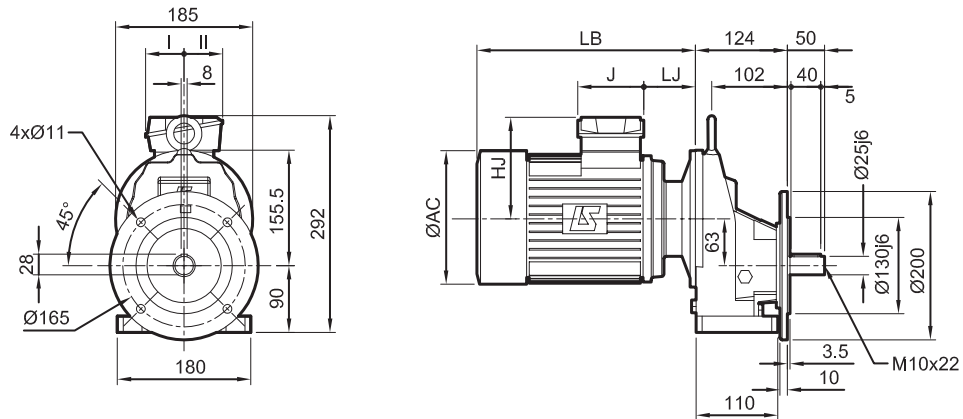
- S foot mounted

 Cb: 8.3 kg + Motor





- Standard BS flange



 Cb: 10.3 kg + Motor



4-pole motors

Fr. size	LSES							 kg	LSES FCR							 kg
	AC	HJ	J	LB	LJ	I	II		AC	HJ	J	LB	LJ	I	II	
LSES 80	170	135	86	288	67.5	43	43	11.7	172	146	160	349.5	46	55	55	18
LSES 90	190	135	86	290	71	43	43	15.2	184	156	160	349.5	58.5	55	55	24.2
LSES 100 LR	200	140	86	354.5	72	43	43	25.7	200	161	160	410	59.5	55	55	30
LSES 112 MU	235	149	86	371	73.5	43	43	35	235	169	160	434	61	55	55	44.5
LSES 132 SU	260	172	126	397	52.5	63	63	42	235	169	160	477	61	55	55	48

4-pole motors

Fr. size	LS							 kg	LS FCR							 kg
	AC	HJ	J	LB	LJ	I	II		AC	HJ	J	LB	LJ	I	II	
LS 71 L	140	109	86	217	49	43	43	8.3	140	135	160	268	34	55	55	11.3
LS 80 L	-	-	-	-	-	-	-	-	172	146	160	300	46	55	55	18
LS 90 L	-	-	-	-	-	-	-	-	184	156	160	349.5	58.5	55	55	24.2
LS 100 L	-	-	-	-	-	-	-	-	200	161	160	397.5	59.5	55	55	30
LS 112 MG	-	-	-	-	-	-	-	-	235	169	160	434	61	55	55	44.5
LS 132 S	-	-	-	-	-	-	-	-	235	169	160	457	61	55	55	48

Electromechanical products


Compabloc 3000

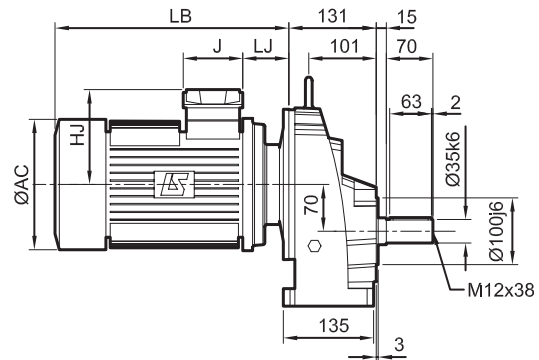
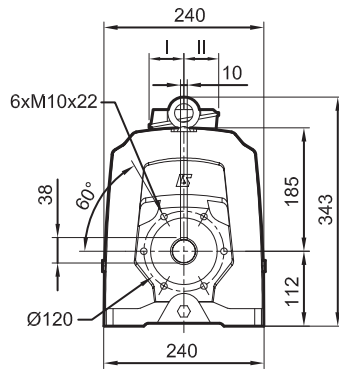
Dimensions

Dimensions of Compabloc (Cb) gearboxes, MI integral mounting,
Cb 3331


Dimensions in millimetres

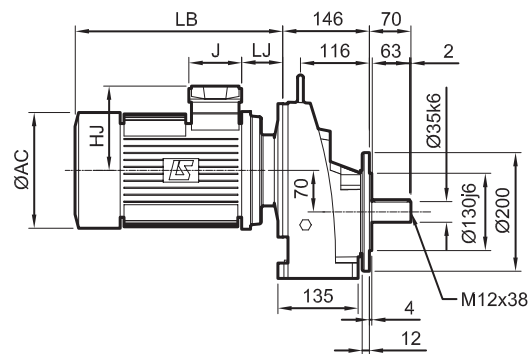
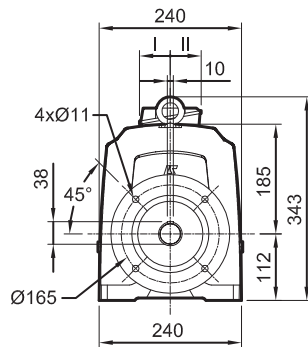
- BT faceplate form

 Cb: 15.5 kg + Motor



- BD1 flange

 Cb: 18.3 kg + Motor



Electromechanical products


Compabloc 3000

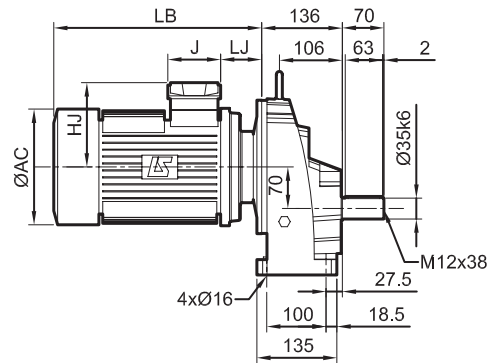
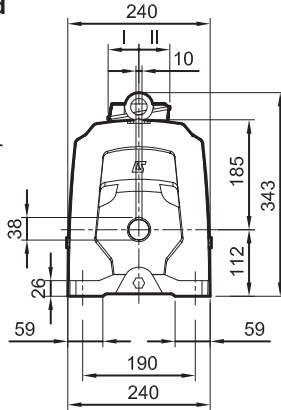
Dimensions

Dimensions of Compabloc (Cb) gearboxes, MI integral mounting, Cb 3331


Dimensions in millimetres

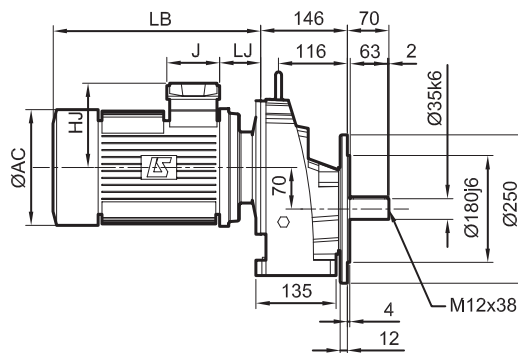
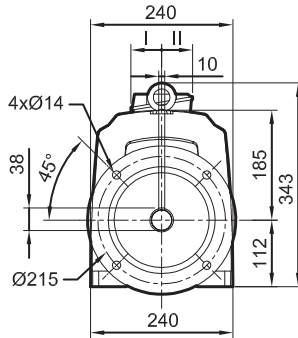
- S foot mounted

 Cb: 15.5 kg + Motor



- Standard BS flange

 Cb: 19.4 kg + Motor



Fr. size	4-pole motors								kg	4-pole motors								kg						
	LSES				LSES FCR					LSES FCR				LSES FCR										
	AC	HJ	J	LB	LJ	I	II	AC		HJ	J	LB	LJ	I	II	AC	HJ		J	LB	LJ	I	II	
LSES 80	170	135	86	284	63.5	43	43	11.7	172	146	160	345.5	42	55	55	18	184	156	160	345.5	54.5	55	55	24.2
LSES 90	190	135	86	286	67	43	43	15.2	200	161	160	406	55.5	55	55	30	235	169	160	430	58	55	55	44.5
LSES 100 LR	200	140	86	350.5	68	43	43	25.7	280	188	160	541	73	55	55	80								
LSES 112 MU	235	149	86	367	69.5	43	43	35																
LSES 132 MU	265	190	126	460	65	63	63	68																

Fr. size	4-pole motors								kg	4-pole motors								kg						
	LS				LS FCR					LS FCR				LS FCR										
	AC	HJ	J	LB	LJ	I	II	AC		HJ	J	LB	LJ	I	II	AC	HJ		J	LB	LJ	I	II	
LS 71 L	140	109	86	213	45	43	43	8.3	140	135	160	264	21.5	55	55	11.3								
LS 80 L	-	-	-	-	-	-	-	-	172	146	160	296	42	55	55	18								
LS 90 L	-	-	-	-	-	-	-	-	184	156	160	345.5	54.5	55	55	24.2								
LS 100 L	-	-	-	-	-	-	-	-	200	161	160	393.5	55.5	55	55	30								
LS 112 MG	-	-	-	-	-	-	-	-	235	169	160	430	58	55	55	44.5								
LS 132 M	-	-	-	-	-	-	-	-	280	188	160	541	73	55	55	80								

Electromechanical products

Compabloc 3000

Dimensions

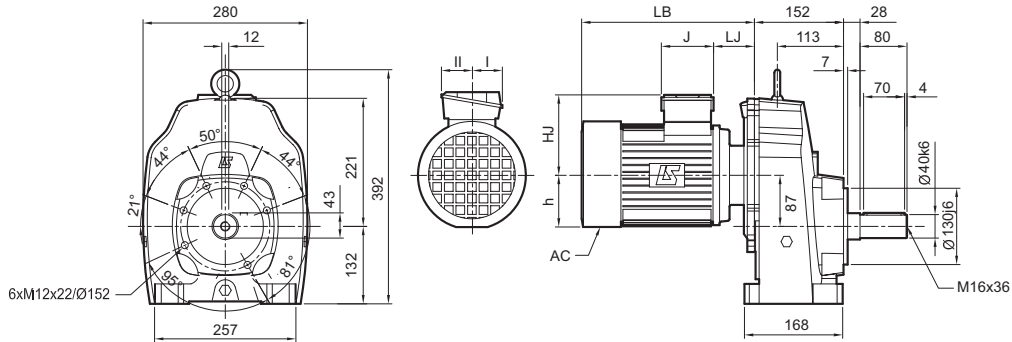
Dimensions of Compabloc (Cb) gearboxes, MI integral mounting,
Cb 3431

Dimensions in millimetres

- BT faceplate form



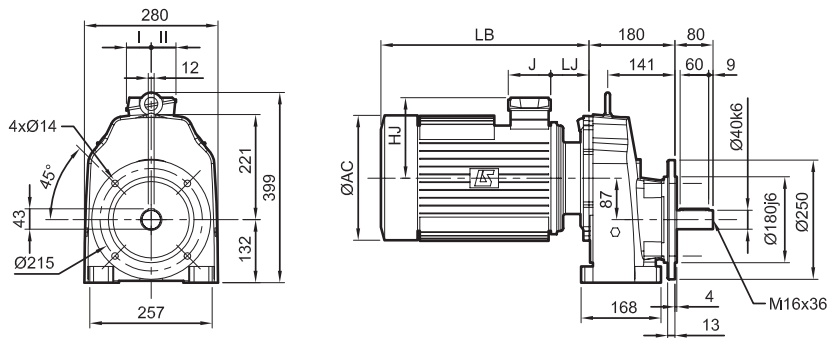
Cb: 25 kg + Motor



- BD1 flange



Cb: 29.5 kg + Motor



Electromechanical products

Compabloc 3000

Dimensions

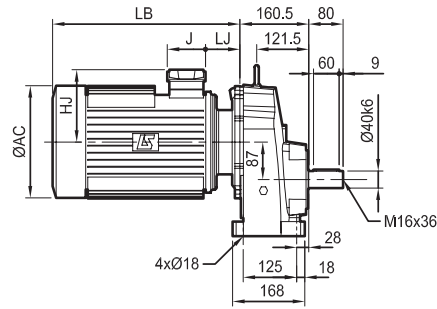
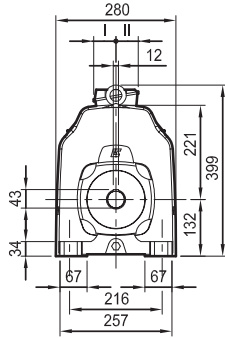
Dimensions of Compabloc (Cb) gearboxes, MI integral mounting,
Cb 3431

Dimensions in millimetres

- S foot mounted



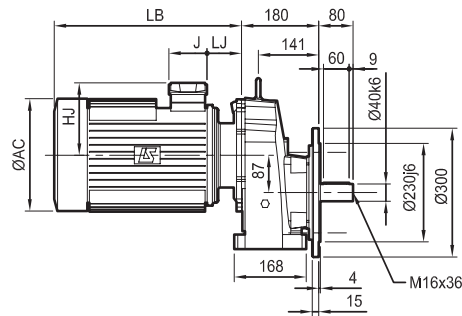
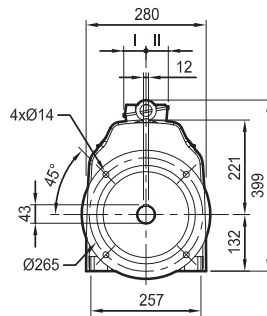
Cb: 25 kg + Motor



- Standard BS flange



Cb: 31 kg + Motor



Fr. size	4-pole motors																								
	LSES							LSES FCR							LSES FCPL										
	AC	HJ	J	LB	LJ	I	II	kg	AC	HJ	J	LB	LJ	I	II	kg	AC	HJ	J	LB	LJ	I	II	kg	
LSES 80 LG	170	135	86	288.5	68	43	43	11.7	172	146	160	345.5	46.5	55	55	18	-	-	-	-	-	-	-	-	-
LSES 90 L	190	135	86	286	67	43	43	15.2	184	156	160	345.5	54.5	55	55	24.2	-	-	-	-	-	-	-	-	-
LSES 100 LR	200	140	86	350.5	68	43	43	25.7	200	161	160	406	55.5	55	55	30	-	-	-	-	-	-	-	-	-
LSES 112 MU	235	149	86	367	69.5	43	43	35	235	169	160	434	62	55	55	44.5	-	-	-	-	-	-	-	-	-
LSES 132 MU	265	190	126	464	69	63	63	68	280	188	160	545	77	55	55	80	-	-	-	-	-	-	-	-	-
LSES 160 L	312	222	126	508	60.8	63	63	91	316	231	160	620	96	55	55	110	345	235	134	681	56.8	92	63	140	
LSES 180 LR	312	248	186	533	67.8	112	98	115	-	-	-	-	-	-	-	-	345	235	134	696	57	92	63	155	

Fr. size	4-pole motors															
	LS FCR							LS FCPL								
	AC	HJ	J	LB	LJ	I	II	kg	AC	HJ	J	LB	LJ	I	II	kg
LS 80 L	172	146	160	300.5	46.5	55	55	18	-	-	-	-	-	-	-	-
LS 90 L	184	156	160	345.5	54.5	55	55	24.2	-	-	-	-	-	-	-	-
LS 100 L	200	161	160	393.5	55.5	55	55	30	-	-	-	-	-	-	-	-
LS 112 MG	235	169	160	434	61	55	55	44.5	-	-	-	-	-	-	-	-
LS 132 M	280	188	160	545	77	55	55	80	-	-	-	-	-	-	-	-
LS 160 L	316	231	160	620	96	55	55	110	345	235	134	681	56.8	92	63	140
LS 180 LR	-	-	-	-	-	-	-	-	345	235	134	696	57	92	63	155

Electromechanical products

Compabloc 3000

Dimensions

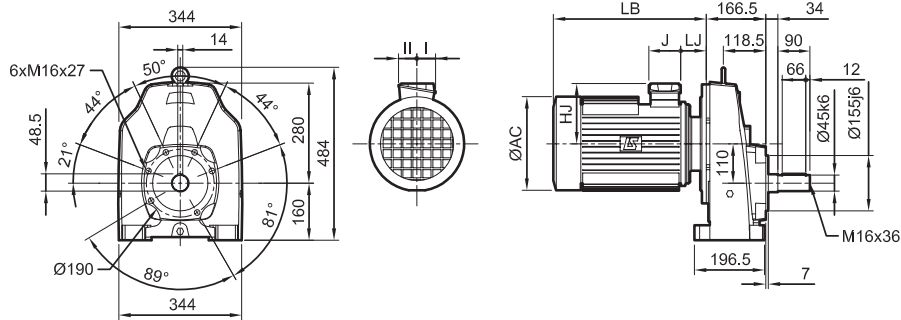
Dimensions of Compabloc (Cb) gearboxes, MI integral mounting,
Cb 3531

Dimensions in millimetres

- BT faceplate form



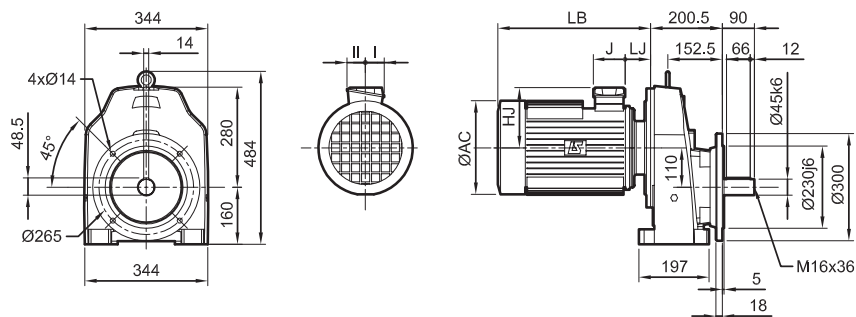
Cb: 41 kg + Motor



- BD1 flange



Cb: 46 kg + Motor



Electromechanical products

Compabloc 3000

Dimensions

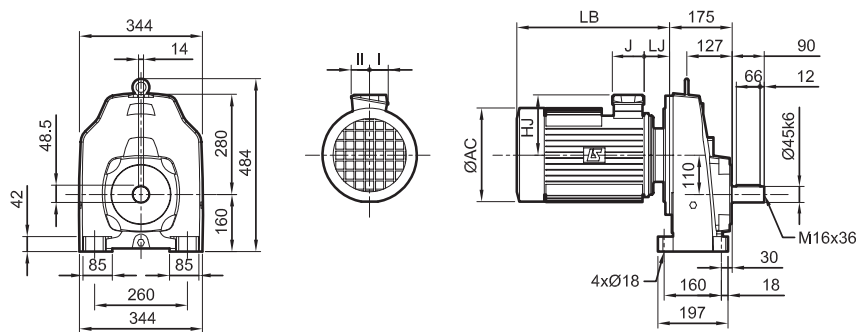
Dimensions of Compabloc (Cb) gearboxes, MI integral mounting, Cb 3531

Dimensions in millimetres

- S foot mounted



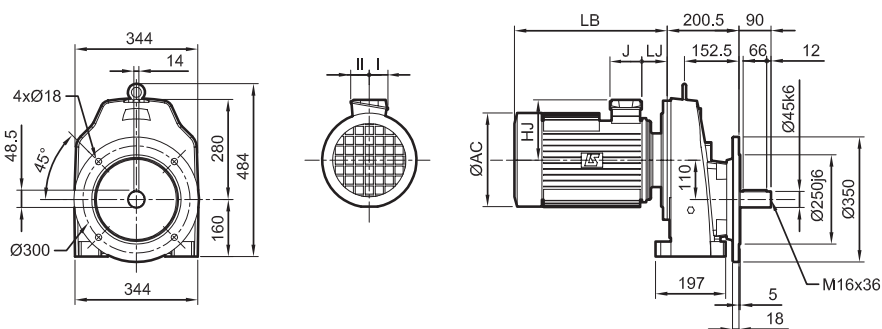
Cb: 41 kg + Motor



- Standard BS flange



Cb: 48 kg + Motor



Fr. size	4-pole motors																								
	LSES							LSES FCR							LSES FCPL										
	AC	HJ	J	LB	LJ	I	II	kg	AC	HJ	J	LB	LJ	I	II	kg	AC	HJ	J	LB	LJ	I	II	kg	
LSES 90 L	190	135	86	281	62	43	43	15.2	184	156	160	340.5	49.5	55	55	24.2	-	-	-	-	-	-	-	-	-
LSES 100 LR	200	140	86	345.5	63	43	43	25.7	200	161	160	401	50.5	55	55	30	-	-	-	-	-	-	-	-	-
LSES 112 MU	235	149	86	362	64.5	43	43	35	235	169	160	425	53	55	55	44.5	-	-	-	-	-	-	-	-	-
LSES 132 MU	265	190	126	455	60	63	63	68	280	188	160	536	56	55	55	80	-	-	-	-	-	-	-	-	-
LSES 160 L	312	222	126	499	51.8	63	63	91	316	231	160	611	87	55	55	110	312	235	134	672	47.8	92	63	140	
LSES 180 LR	312	248	186	524	58.8	112	98	115	-	-	-	-	-	-	-	-	345	235	134	687	48	92	63	150	
LSES 200 LR	350	256	186	618	67.5	112	98	164	-	-	-	-	-	-	-	-	384	256	186	826	67.5	111	98	240	

Fr. size	4-pole motors															
	LS FCR							LS FCPL								
	AC	HJ	J	LB	LJ	I	II	kg	AC	HJ	J	LB	LJ	I	II	kg
LS 90 L	184	156	160	340.5	49.5	55	55	24.2	-	-	-	-	-	-	-	-
LS 100 L	200	161	160	388.5	50.5	55	55	30	-	-	-	-	-	-	-	-
LS 112 MG	235	169	160	425	53	55	55	44.5	-	-	-	-	-	-	-	-
LS 132 M	280	188	160	536	56	55	55	80	-	-	-	-	-	-	-	-
LS 160 LR	316	231	160	611	87	55	55	110	312	235	134	672	47.8	92	63	140
LS 180 LR	-	-	-	-	-	-	-	-	345	235	134	687	48	92	63	150
LS 200 LT	-	-	-	-	-	-	-	-	384	256	186	826	67.5	111	98	240

Electromechanical products

Compabloc 3000

Dimensions

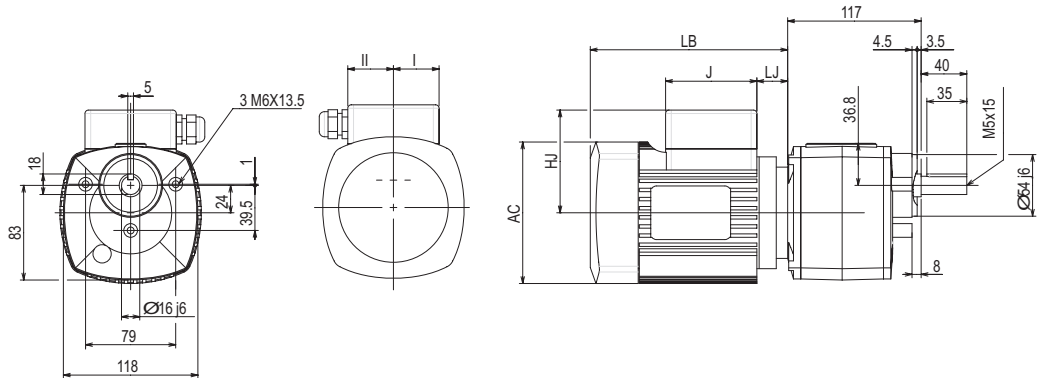
Dimensions of Compabloc (Cb) gearboxes, MI integral mounting,
Cb 15--

Dimensions in millimetres

- BT faceplate form



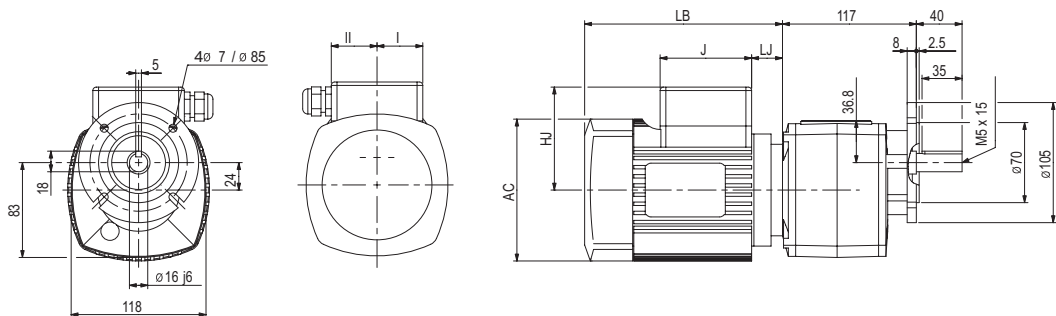
Cb: 2.9 kg + Motor



- BD1 flange



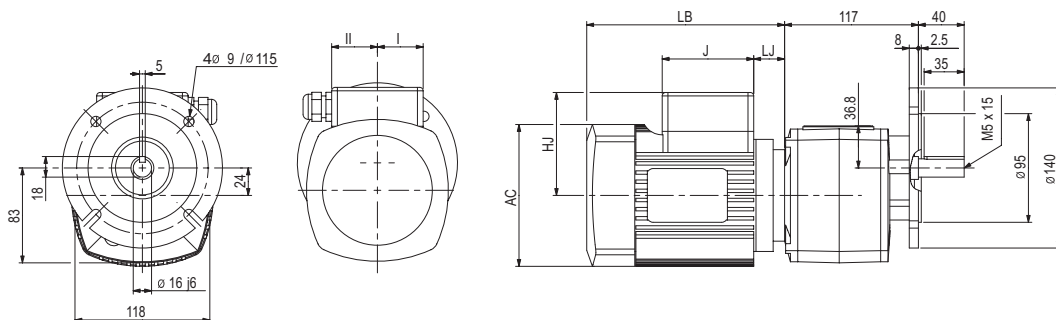
Cb: 2.8 kg + Motor



- BD2 flange



Cb: 3 kg + Motor



Electromechanical products


Compabloc 3000

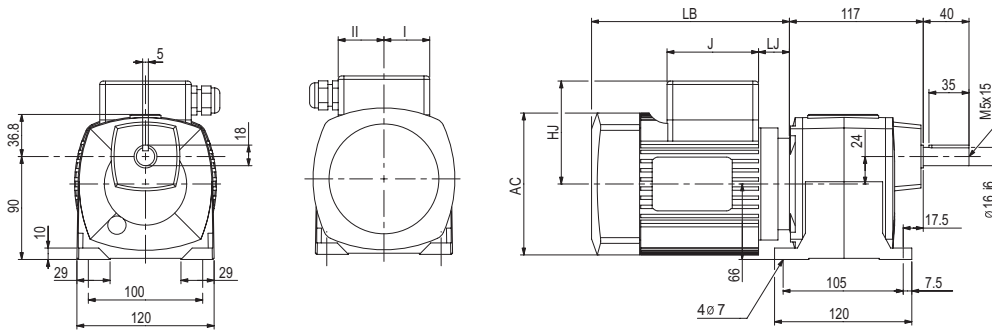
Dimensions

Dimensions of Compabloc (Cb) gearboxes, MI integral mounting, Cb 15--


Dimensions in millimetres

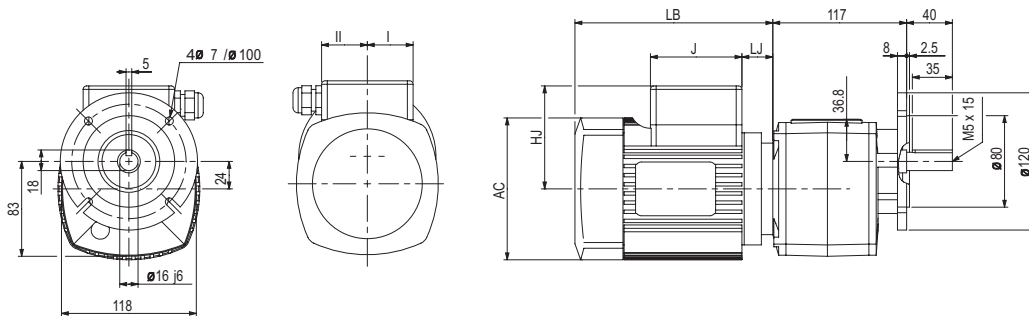
- S foot mounted




 Cb: 2.9 kg + Motor





- Standard BS flange

 Cb: 2.9 kg + Motor



Fr. size	4-pole motors																							
	LS								LS FCR								LS FMD							
	AC	HJ	J	LB	LJ	I	II	 kg	AC	HJ	J	LB	LJ	I	II	 kg	AC	HJ	J	LB	LJ	I	II	 kg
56	110	85	78	156	16	39	39	4	-	-	-	-	-	-	-	-	110	90	86	206	16	43	43	4.3
63	124	95	78	172	26	39	39	5	-	-	-	-	-	-	-	-	124	110	86	222	26	43	43	5.2
71	140	102	78	183	21	39	39	8.3	140	135	160	273	38	55	55	8.5	140	129	86	233	21	43	43	7.4

Fr. size	Single-phase 4-pole LS																	
	LS									LS FMD								
	AC	HJ	J	LB ¹	LB ²	LJ	I ³	II	 kg	AC	HJ	J	LB ¹	LB ²	LJ	I	II	 kg
56	110	90	86	156	135	19	90	44	3.5	110	90	86	206	196	16	43	43	4.4
63	124	110	138	172	150	29	100	44	4.5	124	110	86	222	211	26	43	43	5.4
71	140	129	138	183	155	29	100	44	7.5	140	129	86	233	216	21	43	43	8.4

1. ventilated motor
2. non-ventilated motor
3. with permanent capacitor

Electromechanical products

Compabloc 3000

Dimensions

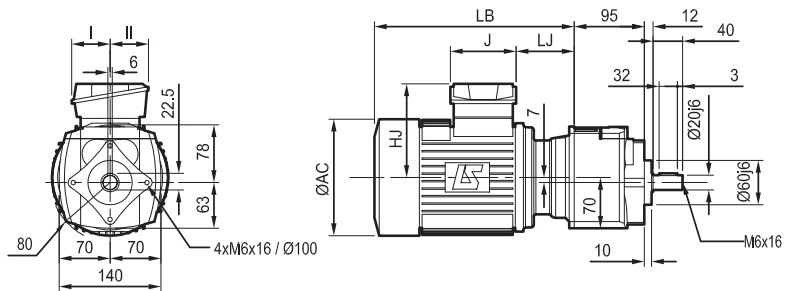
Dimensions of Compabloc (Cb) gearboxes, MI integral mounting,
Cb 3032

Dimensions in millimetres

- BT faceplate form



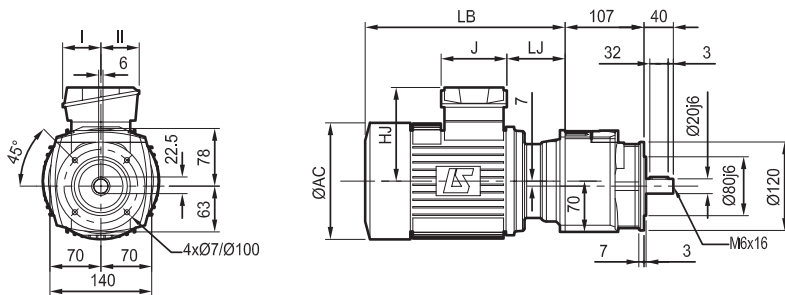
Cb: 4.6 kg + Motor



- BD1 flange



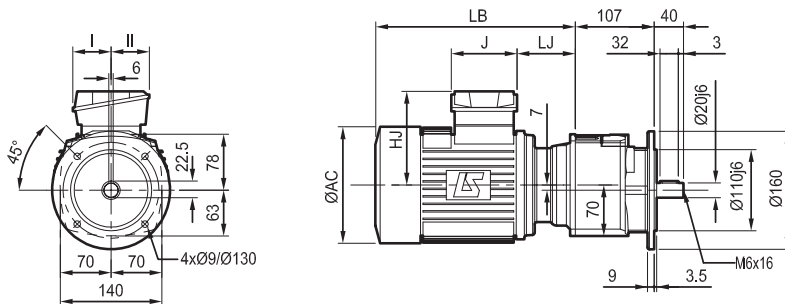
Cb: 4.7 kg + Motor



- BD2 flange



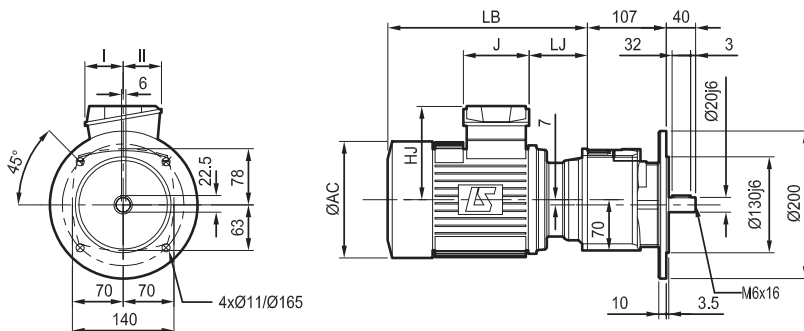
Cb: 4.9 kg + Motor



- BD3 flange



Cb: 5 kg + Motor



Electromechanical products


Compabloc 3000

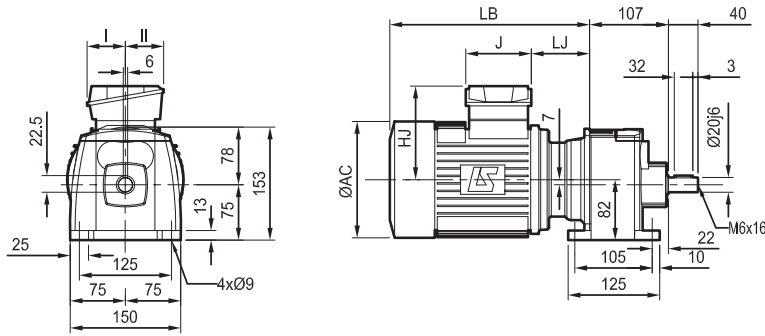
Dimensions

Dimensions of Compabloc (Cb) gearboxes, MI integral mounting,
Cb 3032


Dimensions in millimetres

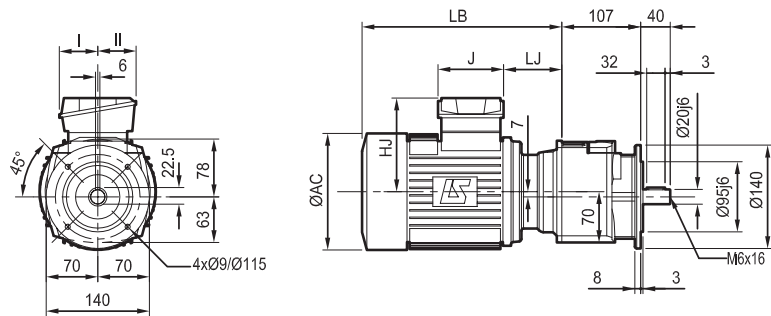
- S foot mounted

 Cb: 4.8 kg + Motor





- Standard BS flange




 Cb: 4.8 kg + Motor





Three-phase 4-pole motors

Fr. size	LSES							 kg	LSES FCR							 kg
	AC	HJ	J	LB	LJ	I	II		AC	HJ	J	LB	LJ	I	II	
LSES 80	170	135	86	309	77	43	43	11.7	172	146	160	349.5	46	55	55	18

Three-phase 4-pole motors

Fr. size	LS							 kg	LS FMD							 kg	LS FCR							 kg
	AC	HJ	J	LB	LJ	I	II		AC	HJ	J	LB	LJ	I	II		AC	HJ	J	LB	LJ	I	II	
LS 56	110	84	86	167	19	43	43	4	110	90	85	217	19	42.5	42.5	4.9	-	-	-	-	-	-	-	-
LS 63	124	89	86	183	29	43	43	5	124	96	85	233	29	42.5	42.5	5.7	-	-	-	-	-	-	-	-
LS 71 L	140	109	86	240	73	43	43	8.3	-	-	-	-	-	-	-	-	140	135	160	268	34	55	55	11.3
LS 80 L	-	-	-	-	-	-	-	-	-	-	-	-	-	-	-	-	172	146	160	300	46	55	55	18

Single-phase 4-pole motors

Fr. size	LS							 kg	LS FMD							 kg
	AC	HJ	J	LB ¹ /LB ²	LJ	I	II		AC	HJ	J	LB ¹ /LB ²	LJ	I	II	
LS 56	110	92	86	167/146	19	90	44	3.5	110	92	86	217/196	18	90	44	4.4
LS 63	124	97	138	183/161	29	100	102.5	5	124	97	138	233/211	29	100	102.5	5.9
LS 71 L	140	107	138	204/166	29	100	102.5	8	140	107	138	244/216	29	100	102.5	8.9

1. ventilated motor.

2. non-ventilated motor.

Electromechanical products

Compabloc 3000

Dimensions

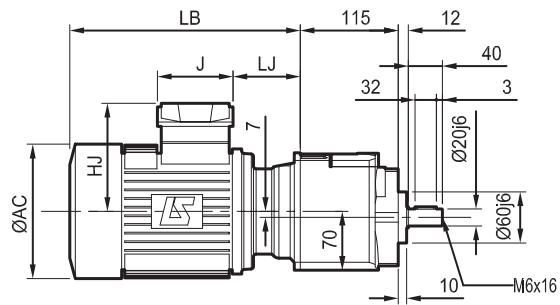
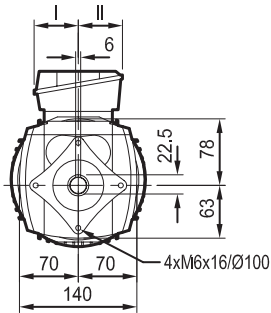
Dimensions of Compabloc (Cb) gearboxes, MI integral mounting,
Cb 3033

Dimensions in millimetres

- BT faceplate form



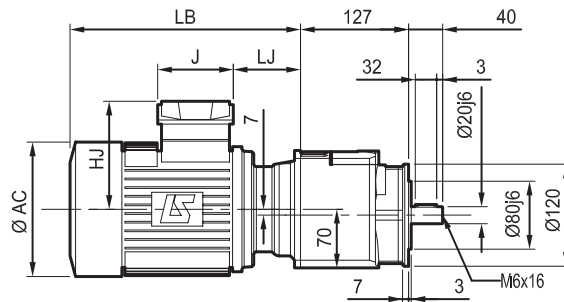
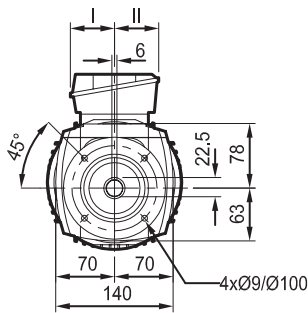
Cb: 4.7 kg + Motor



- BD1 flange



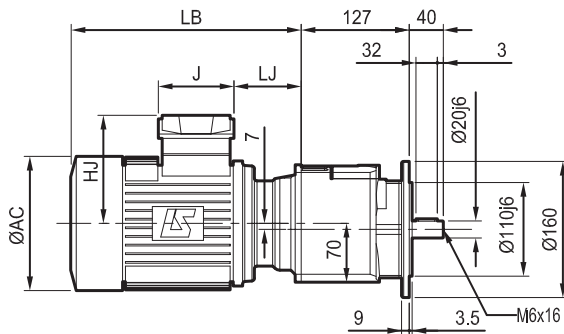
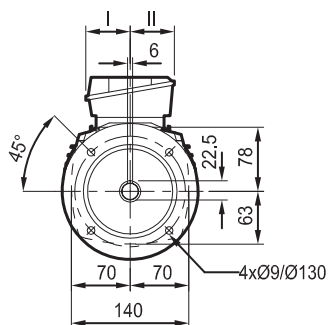
Cb: 4.8 kg + Motor



- BD2 flange



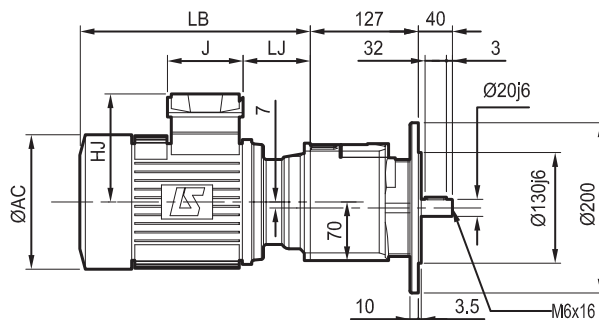
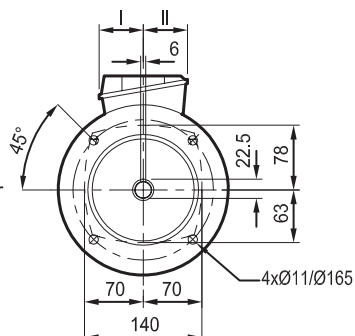
Cb: 5 kg + Motor



- BD3 flange



Cb: 5.1 kg + Motor



Electromechanical products


Compabloc 3000

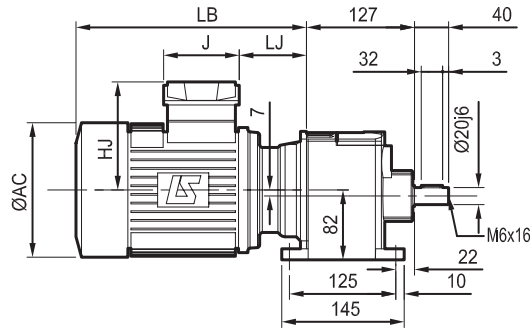
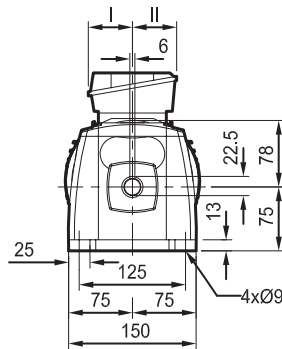
Dimensions

Dimensions of Compabloc (Cb) gearboxes, MI integral mounting, Cb 3033


Dimensions in millimetres

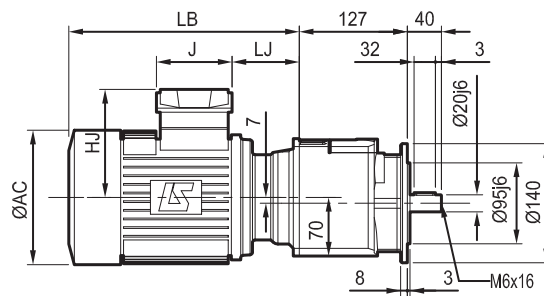
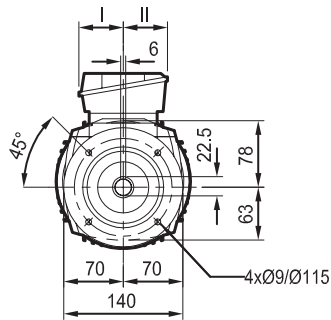
- S foot mounted

 Cb: 4.9 kg + Motor





- Standard BS flange




 Cb: 4.9 kg + Motor





Three-phase 4-pole motors

Fr. size	LSES							 kg	LSES FCR							 kg
	AC	HJ	J	LB	LJ	I	II		AC	HJ	J	LB	LJ	I	II	
LSES 80	170	135	86	309	77	43	43	11.7	172	146	160	349.5	46	55	55	18

Three-phase 4-pole motors

Fr. size	LS							 kg	LS FMD							 kg	LS FCR							 kg	
	AC	HJ	J	LB	LJ	I	II		AC	HJ	J	LB	LJ	I	II		AC	HJ	J	LB	LJ	I	II		
LS 56	110	84	86	167	19	43	43	4	110	90	85	217	19	42.5	42.5	4.9	-	-	-	-	-	-	-	-	-
LS 63	124	89	86	183	29	43	43	5	124	96	85	233	29	42.5	42.5	5.7	-	-	-	-	-	-	-	-	-
LS 71 L	140	109	86	240	73	43	43	8.3	-	-	-	-	-	-	-	-	140	135	160	268	34	55	55	11.3	
LS 80 L	-	-	-	-	-	-	-	-	-	-	-	-	-	-	-	-	172	146	160	300	46	55	55	18	

Single-phase 4-pole motors

Fr. size	LS							 kg	LS FMD							 kg
	AC	HJ	J	LB ¹ /LB ²	LJ	I	II		AC	HJ	J	LB ¹ /LB ²	LJ	I	II	
LS 56	110	92	86	167/146	19	90	44	3.5	110	92	86	217/196	18	90	44	4.4
LS 63	124	97	138	183/161	29	100	102.5	5	124	97	138	233/211	29	100	102.5	5.9
LS 71 L	140	107	138	204/166	29	100	102.5	8	140	107	138	244/216	29	100	102.5	8.9

1. ventilated motor.
2. non-ventilated motor.

Electromechanical products


Compabloc 3000

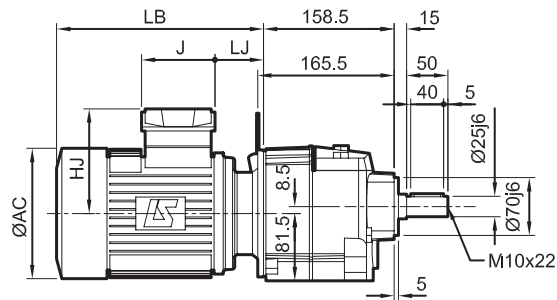
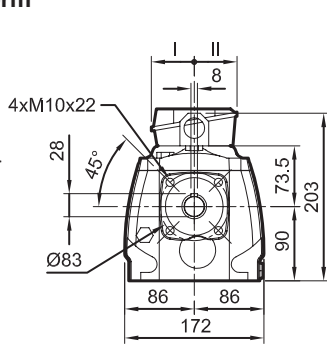
Dimensions

Dimensions of Compabloc (Cb) gearboxes, MI integral mounting,
Cb 3133


Dimensions in millimetres

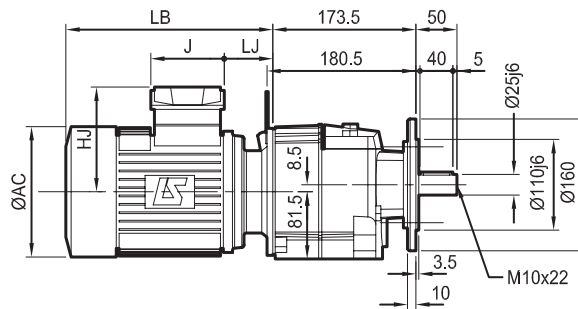
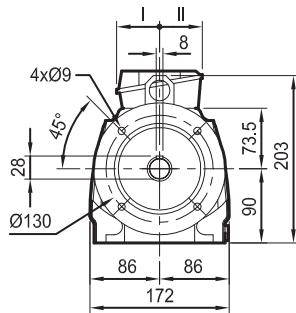
- BT faceplate form

 Cb: 12.7 kg + Motor




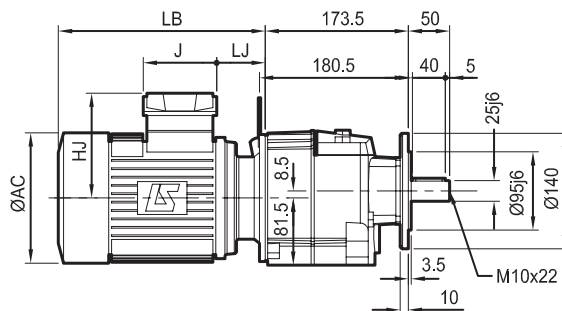
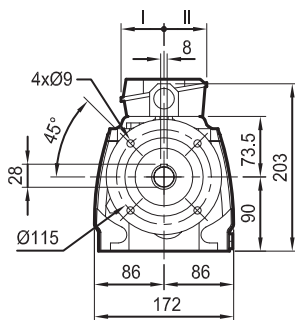
- BD1 flange

 Cb: 13.3 kg + Motor




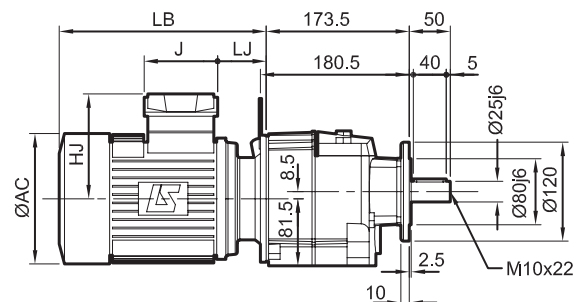
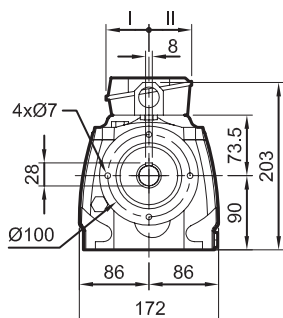
- BD2 flange

 Cb: 13.2 kg + Motor



- BD3 flange

 Cb: 13.1 kg + Motor



Electromechanical products


Compabloc 3000

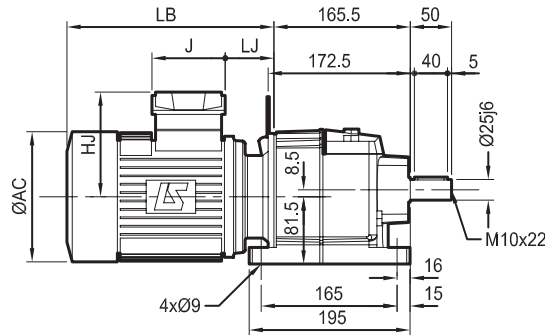
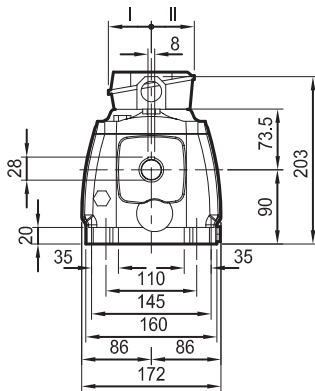
Dimensions

Dimensions of Compabloc (Cb) gearboxes, MI integral mounting, Cb 3133


Dimensions in millimetres

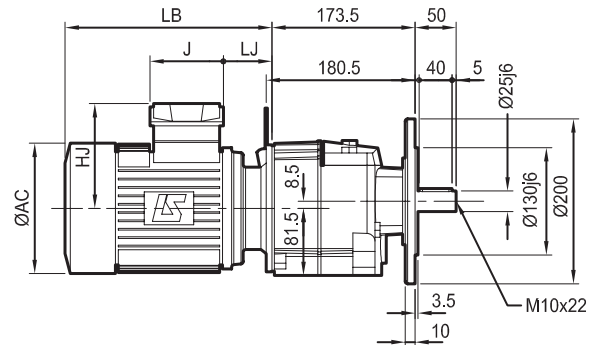
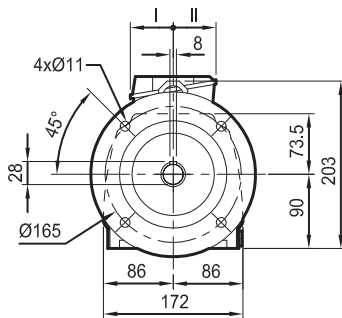
- S foot mounted

 Cb: 13 kg + Motor





- Standard BS flange



 Cb: 13.4 kg + Motor



4-pole motors

Fr. size	LSES								LSES FCR							
	AC	HJ	J	LB	LJ	I	II	 kg	AC	HJ	J	LB	LJ	I	II	 kg
LSES 80	170	135	86	288.5	67.5	43	43	11.7	172	146	160	349.5	46	55	55	18
LSES 90	190	135	86	290	71	43	43	15.2	184	156	160	349.5	58.5	55	55	24.2
LSES 100 LR	200	140	86	354.5	72	43	43	25.7	200	161	160	410	59.5	55	55	30

4-pole motors

Fr. size	LS								LS FCR							
	AC	HJ	J	LB	LJ	I	II	 kg	AC	HJ	J	LB	LJ	I	II	 kg
LS 71 L	140	109	86	217	49	43	43	8.3	140	135	160	268	34	55	55	11.3
LS 80 L	-	-	-	-	-	-	-	-	172	146	160	300	46	55	55	18
LS 90 L	-	-	-	-	-	-	-	-	184	156	160	349.5	58.5	55	55	24.2
LS 100 L	-	-	-	-	-	-	-	-	200	161	160	397.5	59.5	55	55	30

Electromechanical products


Compabloc 3000

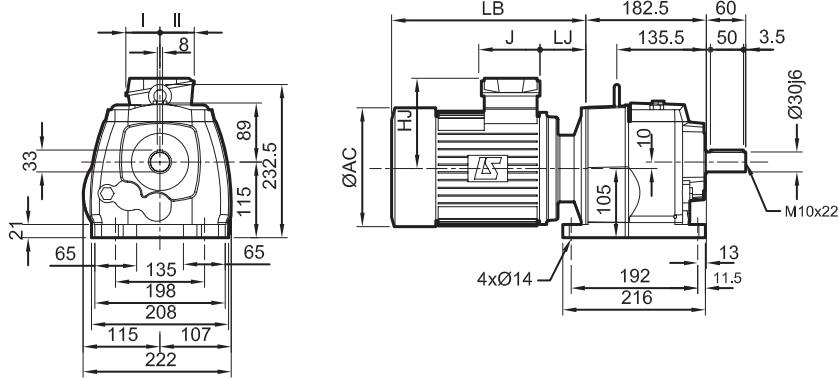
Dimensions

Dimensions of Compabloc (Cb) gearboxes, MI integral mounting, Cb 3233


Dimensions in millimetres

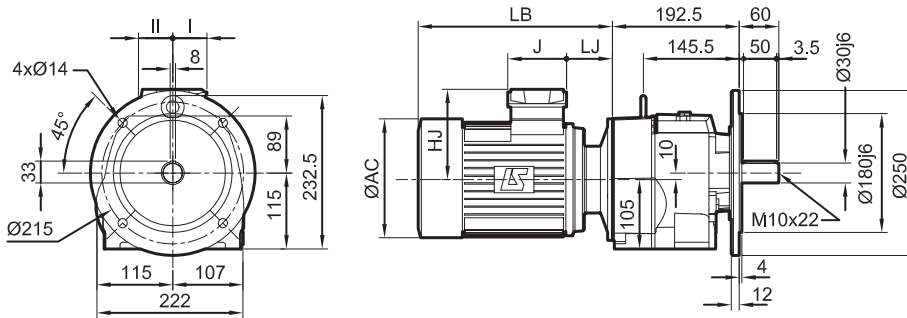
- S foot mounted



 Cb: 18.5 kg + Motor





- Standard BS flange

 Cb: 18.8 kg + Motor



Fr. size	4-pole motors								 kg	4-pole motors								 kg						
	LSES				LSES FCR					LSES				LSES FCR										
	AC	HJ	J	LB	LJ	I	II	AC		HJ	J	LB	LJ	I	II	AC	HJ		J	LB	LJ	I	II	
LSES 80	170	135	86	288	67.5	43	43	11.7	172	146	160	349.5	46	55	55	18	184	156	160	349.5	58.5	55	55	24.2
LSES 90	190	135	86	290	71	43	43	15.2	200	161	160	410	59.5	55	55	30	235	169	160	434	61	55	55	44.5
LSES 100 LR	200	140	86	354.5	72	43	43	25.7	235	169	160	477	61	55	55	48								
LSES 112 MU	235	149	86	371	73.5	43	43	35																
LSES 132 SU	260	172	126	397	52.5	63	63	42																

Fr. size	4-pole motors								 kg	4-pole motors								 kg						
	LS				LS FCR					LS				LS FCR										
	AC	HJ	J	LB	LJ	I	II	AC		HJ	J	LB	LJ	I	II	AC	HJ		J	LB	LJ	I	II	
LS 71 L	140	109	86	217	49	43	43	8.3	140	135	160	268	34	55	55	11.3	172	146	160	300	46	55	55	18
LS 80 L	-	-	-	-	-	-	-	-	172	146	160	300	46	55	55	18	184	156	160	349.5	58.5	55	55	24.2
LS 90 L	-	-	-	-	-	-	-	-	200	161	160	397.5	59.5	55	55	30	235	169	160	434	61	55	55	44.5
LS 100 L	-	-	-	-	-	-	-	-	235	169	160	457	61	55	55	48								
LS 112 MG	-	-	-	-	-	-	-	-																
LS 132 S	-	-	-	-	-	-	-	-																

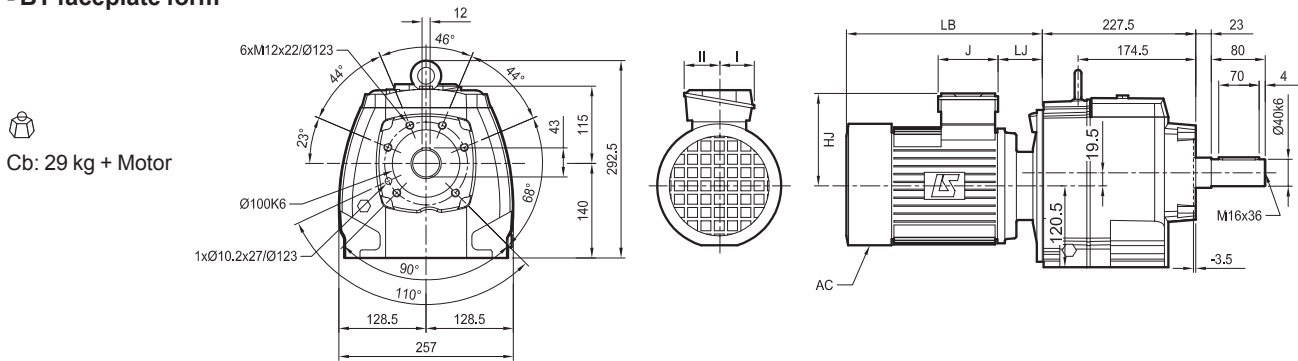
Electromechanical products

Compabloc 3000

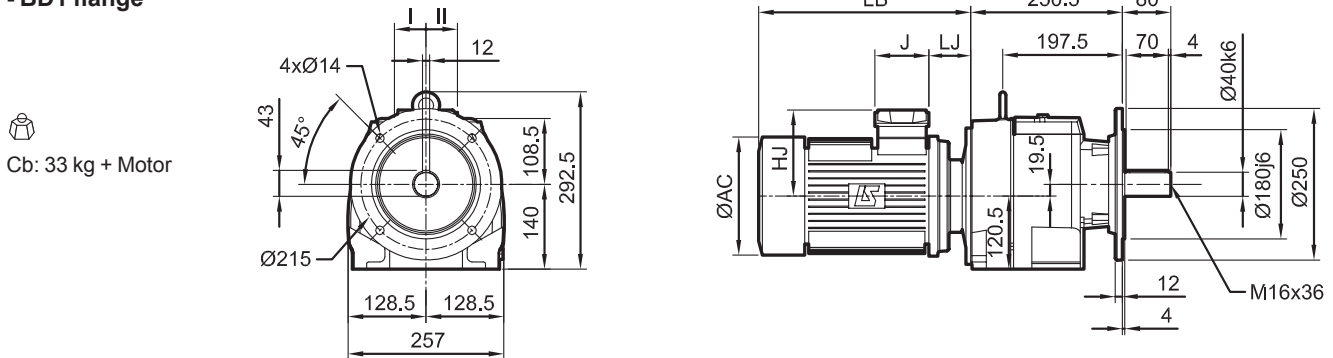
Dimensions

Dimensions of Compabloc (Cb) gearboxes, MI integral mounting,
Cb 3333

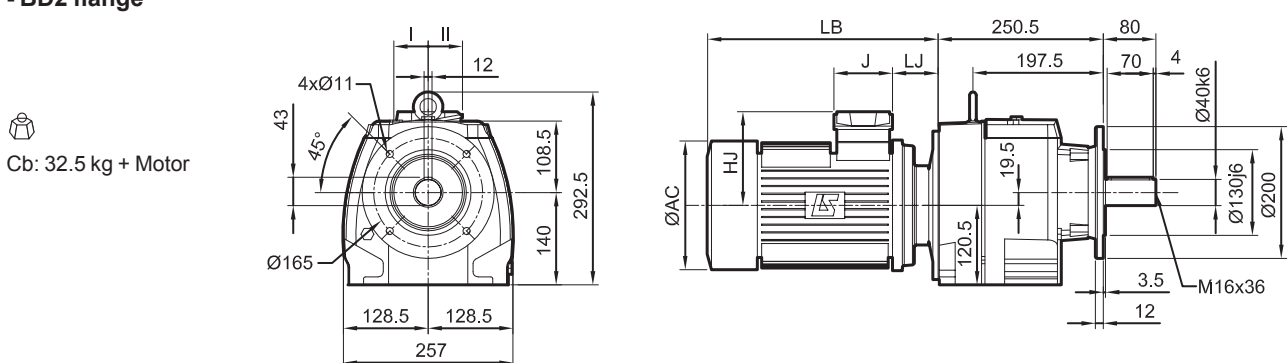
- BT faceplate form



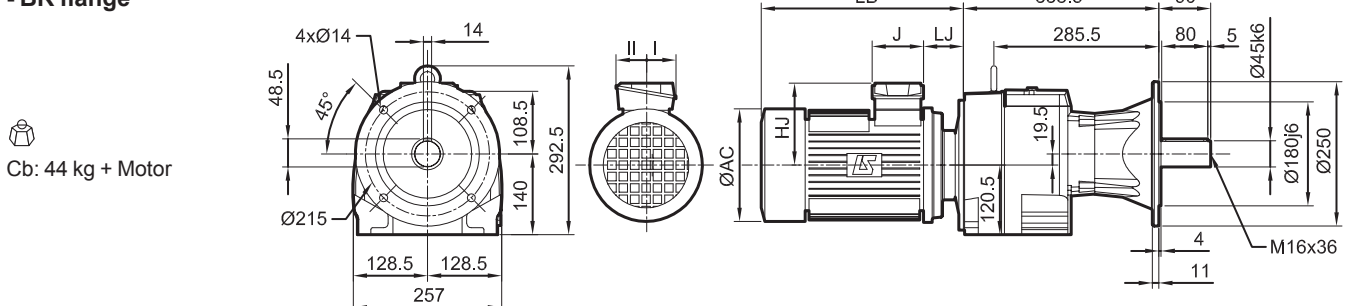
- BD1 flange



- BD2 flange



- BR flange



Electromechanical products


Compabloc 3000

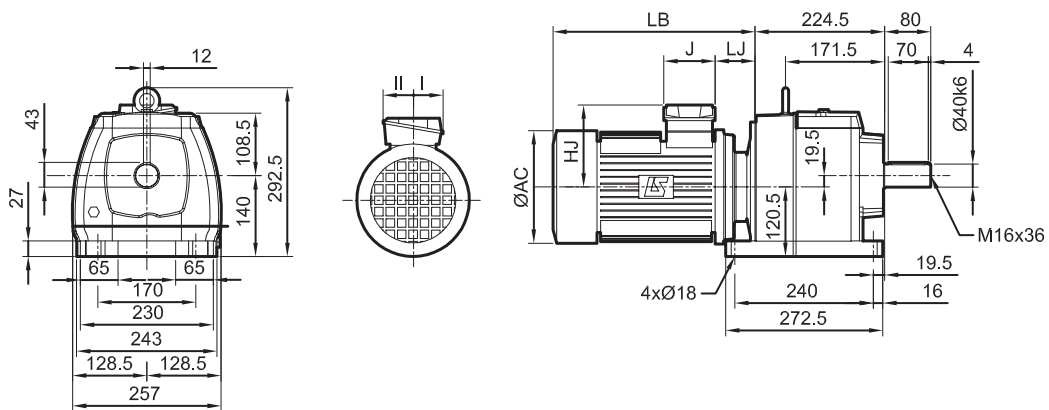
Dimensions

Dimensions of Compabloc (Cb) gearboxes, MI integral mounting,
Cb 3333


Dimensions in millimetres

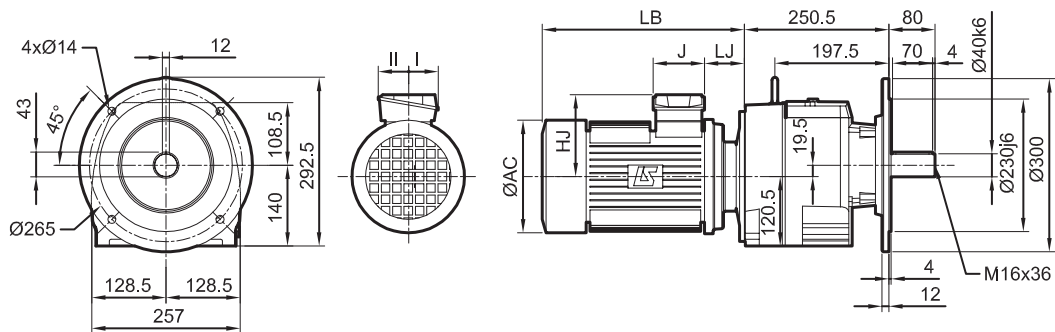
- S foot mounted



 Cb: 30 kg + Motor





- Standard BS flange

 Cb: 34 kg + Motor



Fr. size	4-pole motors								 kg	4-pole motors								 kg						
	LSES				LSES FCR					LSES				LSES FCR										
	AC	HJ	J	LB	LJ	I	II	AC		HJ	J	LB	LJ	I	II	AC	HJ		J	LB	LJ	I	II	
LSES 80	170	135	86	284	63.5	43	43	11.7	172	146	160	345.5	42	55	55	18	184	156	160	345.5	54.5	55	55	24.2
LSES 90	190	135	86	286	67	43	43	15.2	200	161	160	406	55.5	55	55	30	235	169	160	430	58	55	55	44.5
LSES 100 LR	200	140	86	350.5	68	43	43	25.7	280	188	160	541	73	55	55	80								
LSES 112 MU	235	149	86	367	69.5	43	43	35																
LSES 132 MU	265	190	126	460	65	63	63	68																

Fr. size	4-pole motors								 kg	4-pole motors								 kg						
	LS				LS FCR					LS				LS FCR										
	AC	HJ	J	LB	LJ	I	II	AC		HJ	J	LB	LJ	I	II	AC	HJ		J	LB	LJ	I	II	
LS 71 L	140	109	86	213	45	43	43	8.3	140	135	160	264	21.5	55	55	11.3	172	146	160	296	42	55	55	18
LS 80 L	-	-	-	-	-	-	-	-	172	146	160	296	42	55	55	18	184	156	160	345.5	54.5	55	55	24.2
LS 90 L	-	-	-	-	-	-	-	-	200	161	160	393.5	55.5	55	55	30	235	169	160	430	58	55	55	44.5
LS 100 L	-	-	-	-	-	-	-	-	280	188	160	541	73	55	55	80								
LS 112 MG	-	-	-	-	-	-	-	-																
LS 132 M	-	-	-	-	-	-	-	-																

Electromechanical products

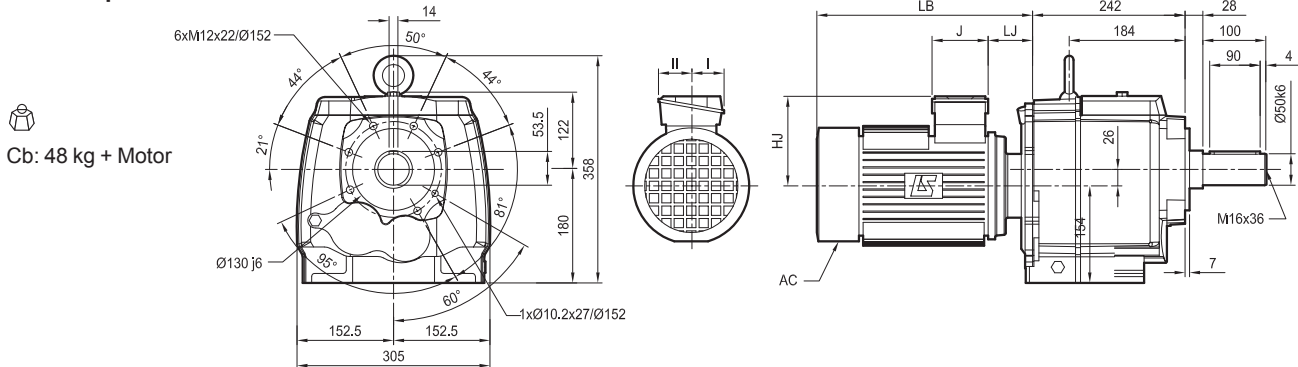
Compabloc 3000

Dimensions

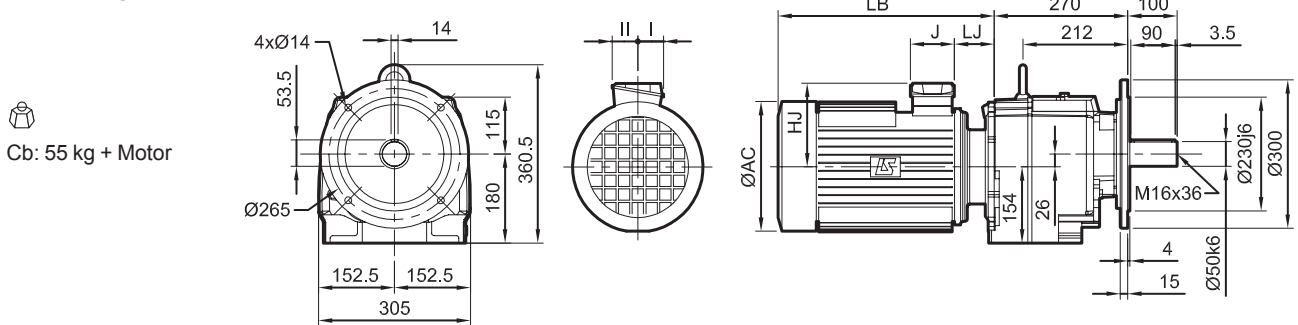
Dimensions of Compabloc (Cb) gearboxes, MI integral mounting,
Cb 3433

Dimensions in millimetres

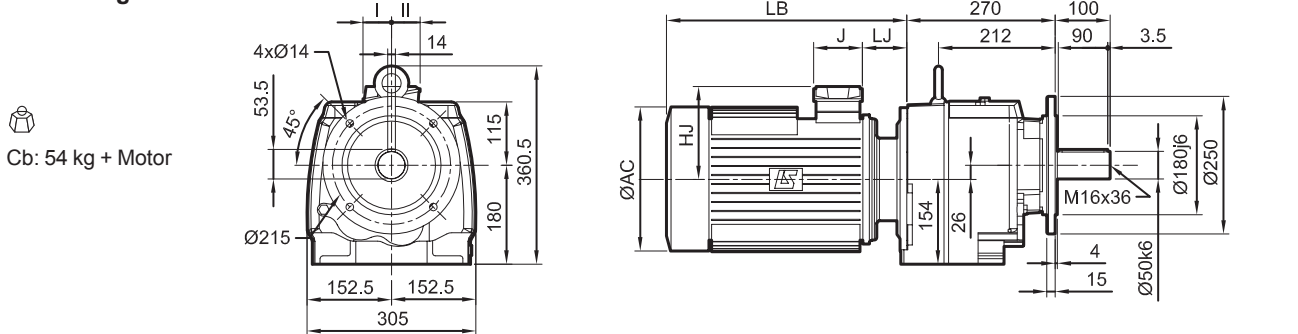
- BT faceplate form



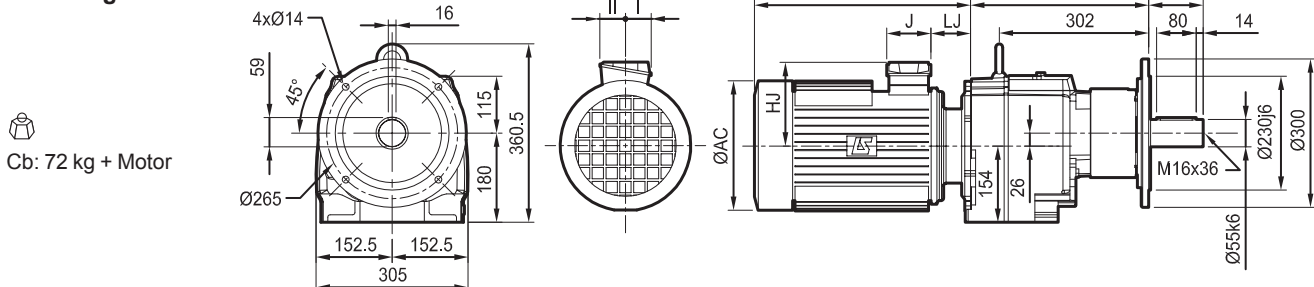
- BD1 flange



- BD2 flange



- BR flange



Electromechanical products

Compabloc 3000

Dimensions

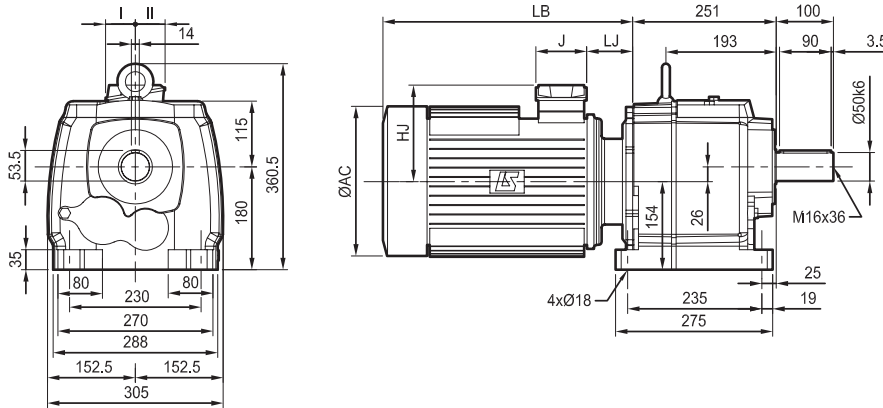
Dimensions of Compabloc (Cb) gearboxes, MI integral mounting, Cb 3433

Dimensions in millimetres

- S foot mounted



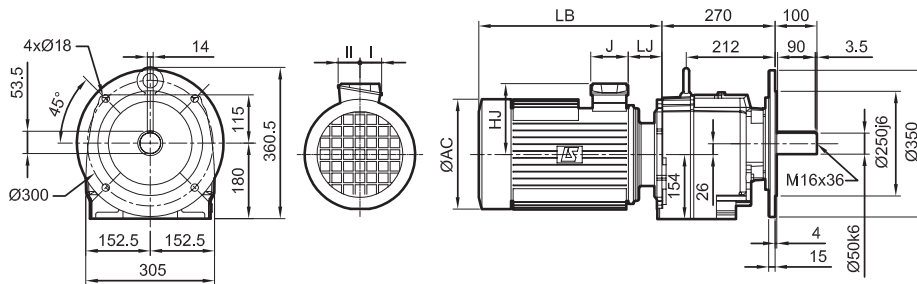
Cb: 50 kg + Motor



- Standard BS flange



Cb: 56 kg + Motor



Fr. size	4-pole motors																								
	LSES							LSES FCR							LSES FCPL										
	AC	HJ	J	LB	LJ	I	II	kg	AC	HJ	J	LB	LJ	I	II	kg	AC	HJ	J	LB	LJ	I	II	kg	
LSES 80 LG	170	135	86	288.5	68	43	43	11.7	172	146	160	345.5	46.5	55	55	18	-	-	-	-	-	-	-	-	-
LSES 90 L	190	135	86	286	67	43	43	15.2	184	156	160	345.5	54.5	55	55	24.2	-	-	-	-	-	-	-	-	-
LSES 100 LR	200	140	86	350.5	68	43	43	25.7	200	161	160	406	55.5	55	55	30	-	-	-	-	-	-	-	-	-
LSES 112 MU	235	149	86	367	69.5	43	43	35	235	169	160	434	62	55	55	44.5	-	-	-	-	-	-	-	-	-
LSES 132 MU	265	190	126	464	69	63	63	68	280	188	160	545	77	55	55	80	-	-	-	-	-	-	-	-	-
LSES 160 L	312	222	126	508	60.8	63	63	91	316	231	160	620	96	55	55	110	345	235	134	681	56.8	92	63	140	
LSES 180 LR	312	248	186	533	67.8	112	98	115	-	-	-	-	-	-	-	-	345	235	134	696	57	92	63	155	

Fr. size	4-pole motors															
	LS FCR							LS FCPL								
	AC	HJ	J	LB	LJ	I	II	kg	AC	HJ	J	LB	LJ	I	II	kg
LS 80 L	172	146	160	300.5	46.5	55	55	18	-	-	-	-	-	-	-	-
LS 90 L	184	156	160	345.5	54.5	55	55	24.2	-	-	-	-	-	-	-	-
LS 100 L	200	161	160	393.5	55.5	55	55	30	-	-	-	-	-	-	-	-
LS 112 MG	235	169	160	434	61	55	55	44.5	-	-	-	-	-	-	-	-
LS 132 M	280	188	160	545	77	55	55	80	-	-	-	-	-	-	-	-
LS 160 L	316	231	160	620	96	55	55	110	345	235	134	681	56.8	92	63	140
LS 180 LR	-	-	-	-	-	-	-	-	345	235	134	696	57	92	63	155

Electromechanical products

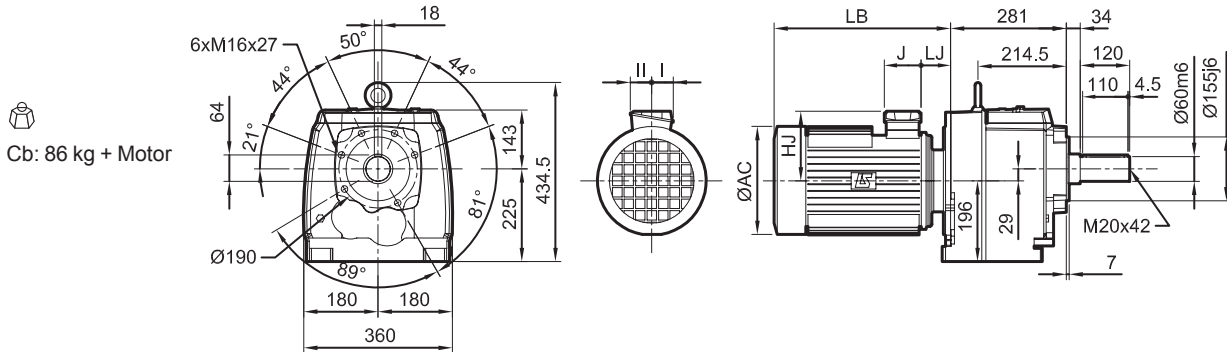
Compabloc 3000

Dimensions

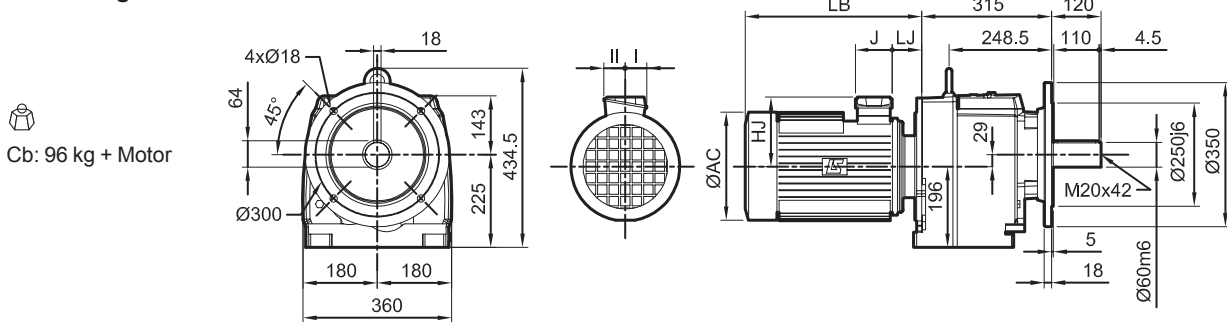
Dimensions of Compabloc (Cb) gearboxes, MI integral mounting,
Cb 3533

Dimensions in millimetres

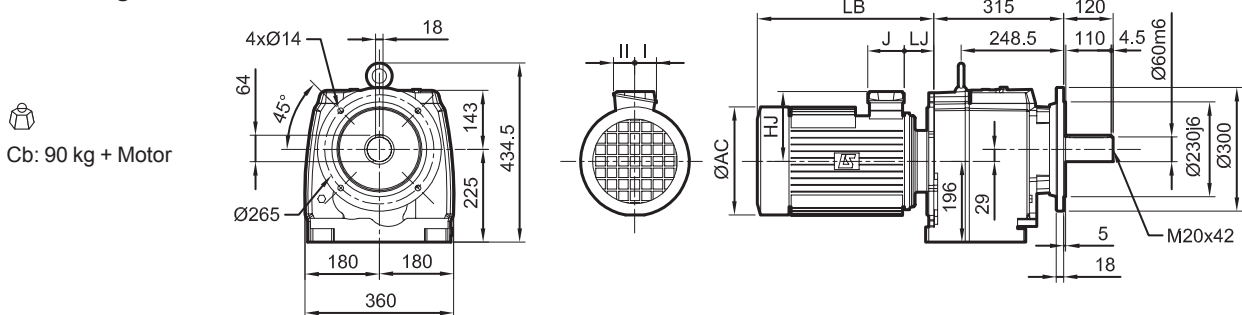
- BT faceplate form



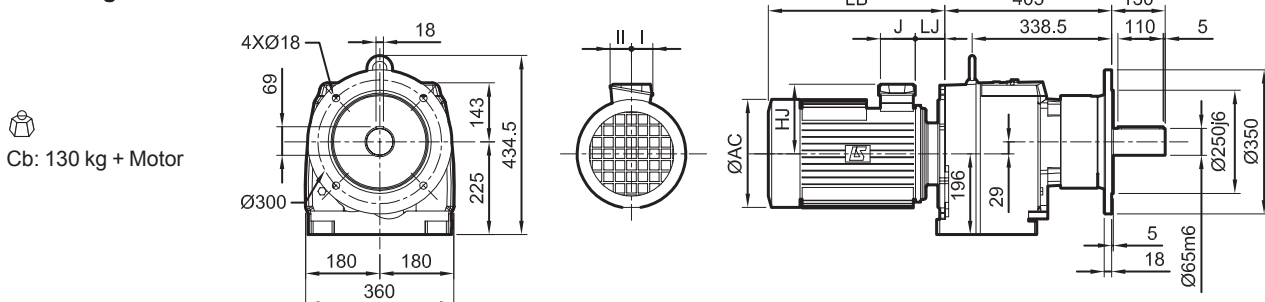
- BD1 flange



- BD2 flange



- BR flange



Electromechanical products


Compabloc 3000

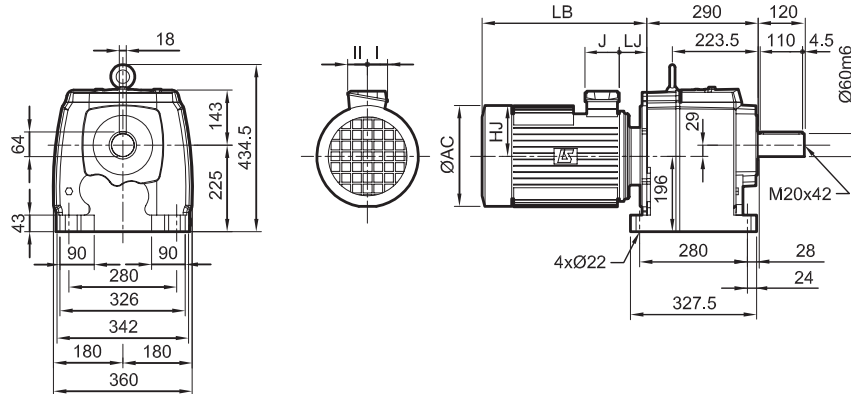
Dimensions

Dimensions of Compabloc (Cb) gearboxes, MI integral mounting, Cb 3533


Dimensions in millimetres

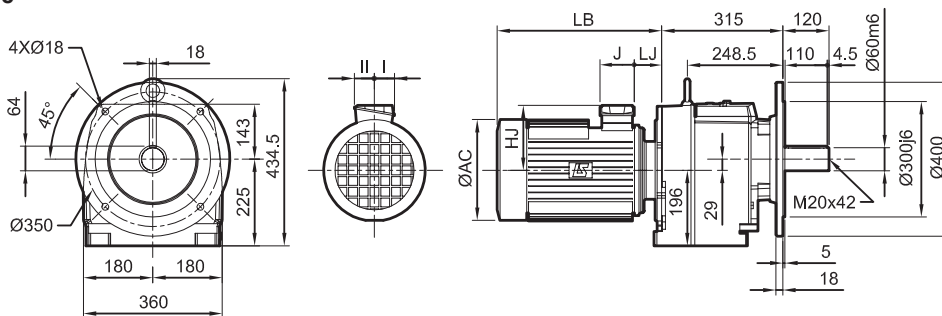
- S foot mounted

 Cb: 90 kg + Motor



- Standard BS flange

 Cb: 97 kg + Motor



Fr. size	4-pole motors																							
	LSES							LSES FCR							LSES FCPL									
	AC	HJ	J	LB	LJ	I	II	AC	HJ	J	LB	LJ	I	II	AC	HJ	J	LB	LJ	I	II			
LSES 90 L	190	135	86	281	62	43	43	15.2	184	156	160	340.5	49.5	55	55	24.2	-	-	-	-	-	-	-	-
LSES 100 LR	200	140	86	345.5	63	43	43	25.7	200	161	160	401	50.5	55	55	30	-	-	-	-	-	-	-	-
LSES 112 MU	235	149	86	362	64.5	43	43	35	235	169	160	425	53	55	55	44.5	-	-	-	-	-	-	-	-
LSES 132 MU	265	190	126	455	60	63	63	68	280	188	160	536	56	55	55	80	-	-	-	-	-	-	-	-
LSES 160 L	312	222	126	499	51.8	63	63	91	316	231	160	611	87	55	55	110	312	235	134	672	47.8	92	63	140
LSES 180 LR	312	248	186	524	58.8	112	98	115	-	-	-	-	-	-	-	-	345	235	134	687	48	92	63	150
LSES 200 LR	350	256	186	618	67.5	112	98	164	-	-	-	-	-	-	-	-	384	256	186	826	67.5	111	98	240

Fr. size	4-pole motors															
	LS FCR							LS FCPL								
	AC	HJ	J	LB	LJ	I	II	AC	HJ	J	LB	LJ	I	II		
LS 90 L	184	156	160	340.5	49.5	55	55	24.2	-	-	-	-	-	-	-	
LS 100 L	200	161	160	388.5	50.5	55	55	30	-	-	-	-	-	-	-	
LS 112 MG	235	169	160	425	53	55	55	44.5	-	-	-	-	-	-	-	
LS 132 M	280	188	160	536	56	55	55	80	-	-	-	-	-	-	-	
LS 160 LR	316	231	160	611	87	55	55	110	312	235	134	672	47.8	92	63	140
LS 180 LR	-	-	-	-	-	-	-	-	345	235	134	687	48	92	63	150
LS 200 LT	-	-	-	-	-	-	-	-	384	256	186	826	67.5	111	98	240

Electromechanical products

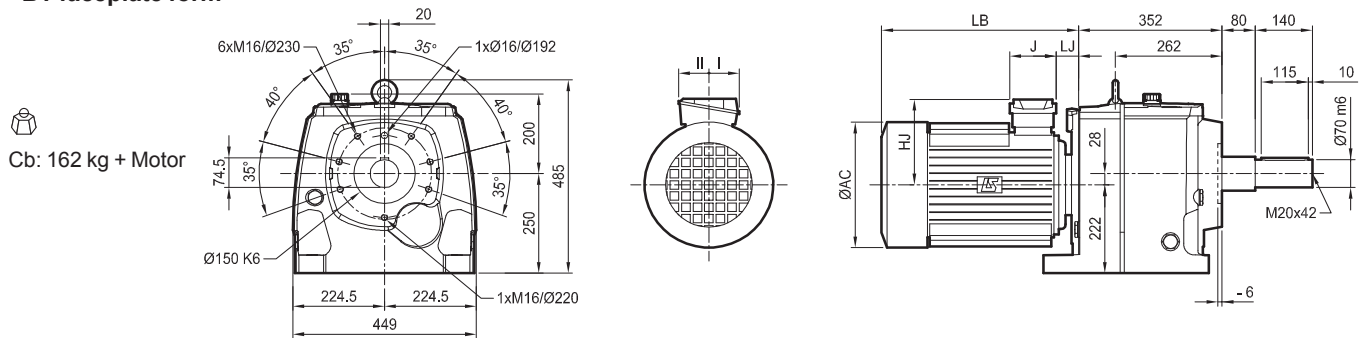
Compabloc 3000

Dimensions

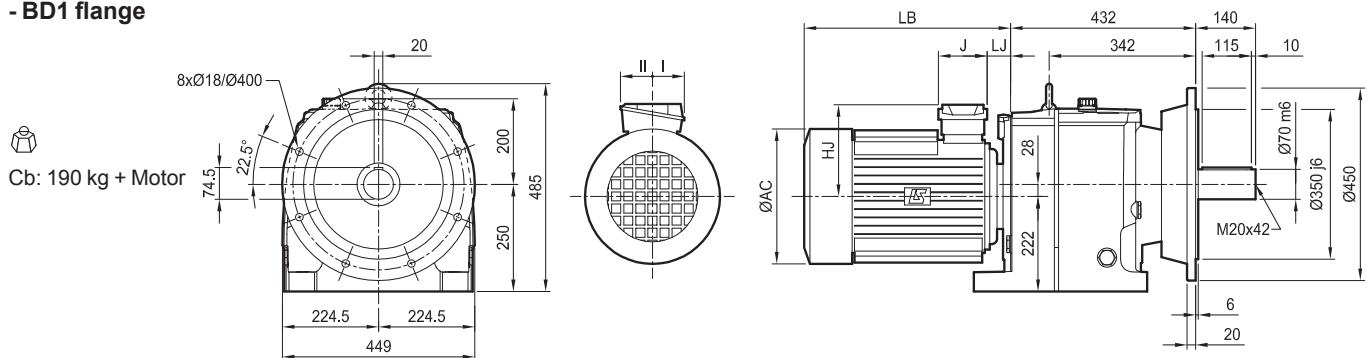
Dimensions of Compabloc (Cb) gearboxes, MI integral mounting,
Cb 3633

Dimensions in millimetres

- BT faceplate form



- BD1 flange



Electromechanical products


Compabloc 3000

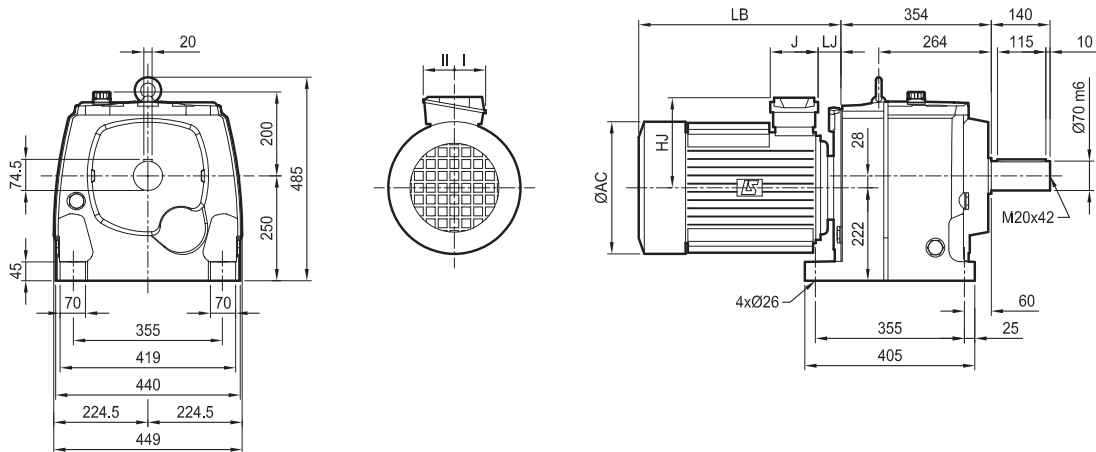
Dimensions

Dimensions of Compabloc (Cb) gearboxes, MI integral mounting,
Cb 3633


Dimensions in millimetres

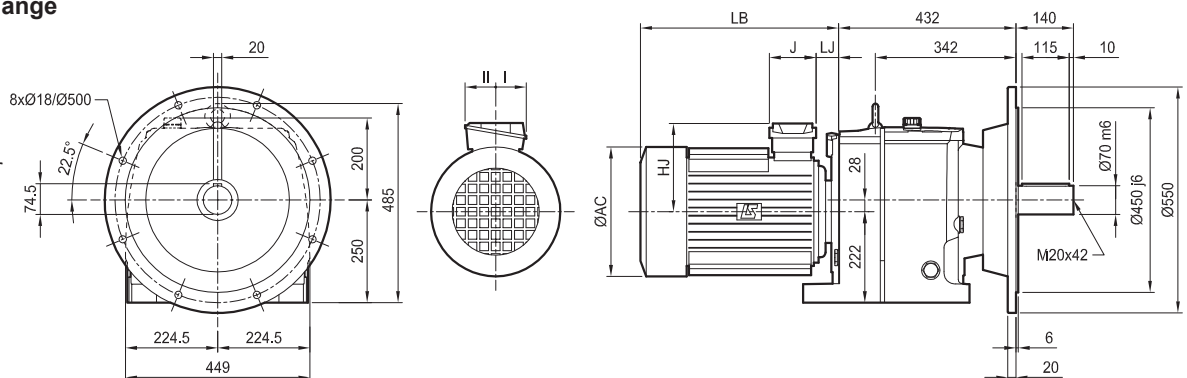
- S foot mounted




 Cb: 162 kg + Motor





- Standard BS flange

 Cb: 196 kg + Motor



Fr. size	4-pole motors																								
	LSES								LSES FCR								LSES FCPL								
	AC	HJ	J	LB	LJ	I	II	 kg	AC	HJ	J	LB	LJ	I	II	 kg	AC	HJ	J	LB	LJ	I	II	 kg	
LSES 90 L	190	135	86	272	53	43	43	15.2	190	156	160	331.5	48.5	55	55	24.2	-	-	-	-	-	-	-	-	-
LSES 100 LR	200	140	86	336.5	54	43	43	25.7	200	161	160	394.5	52	55	55	30	-	-	-	-	-	-	-	-	-
LSES 112 MU	235	149	86	353	55.5	43	43	35	235	169	160	421	51	55	55	44.5	-	-	-	-	-	-	-	-	-
LSES 132 MU	265	190	126	446	51	63	63	68	280	188	160	527	66.5	55	55	80	-	-	-	-	-	-	-	-	-
LSES 160 L	312	222	126	490	42.8	63	63	91	316	231	160	564	58	55	55	110	345	235	134	672	47.8	92	63	140	
LSES 180 LR	312	248	186	515	49.8	112	98	115	-	-	-	-	-	-	-	-	345	235	134	678	39	92	63	150	
LSES 200 LR	350	256	186	609	58.5	112	98	164	-	-	-	-	-	-	-	-	384	256	186	774	84.5	111	98	240	
LSES 225 MR	390	310	231	674	59.5	119	142	235	-	-	-	-	-	-	-	-	410	276	186	837	82	111	98	320	

Fr. size	4-pole motors																
	LS FCR								LS FCPL								
	AC	HJ	J	LB	LJ	I	II	 kg	AC	HJ	J	LB	LJ	I	II	 kg	
LS 90 L	190	156	160	331.5	48.5	55	55	24.2	-	-	-	-	-	-	-	-	-
LS 100 L	200	161	160	382	52	55	55	30	-	-	-	-	-	-	-	-	-
LS 112 MG	235	169	160	421	51	55	55	44.5	-	-	-	-	-	-	-	-	-
LS 132 M	280	188	160	527	66.5	55	55	80	-	-	-	-	-	-	-	-	-
LS 160 L	316	231	160	564	58	55	55	110	345	235	134	672	47.8	92	63	140	
LS 180 LR	-	-	-	-	-	-	-	-	345	235	134	678	39	92	63	150	
LS 200 LT	-	-	-	-	-	-	-	-	384	256	186	774	84.5	111	98	240	
LS 225 MR	-	-	-	-	-	-	-	-	410	276	186	837	82	111	98	320	

Electromechanical products

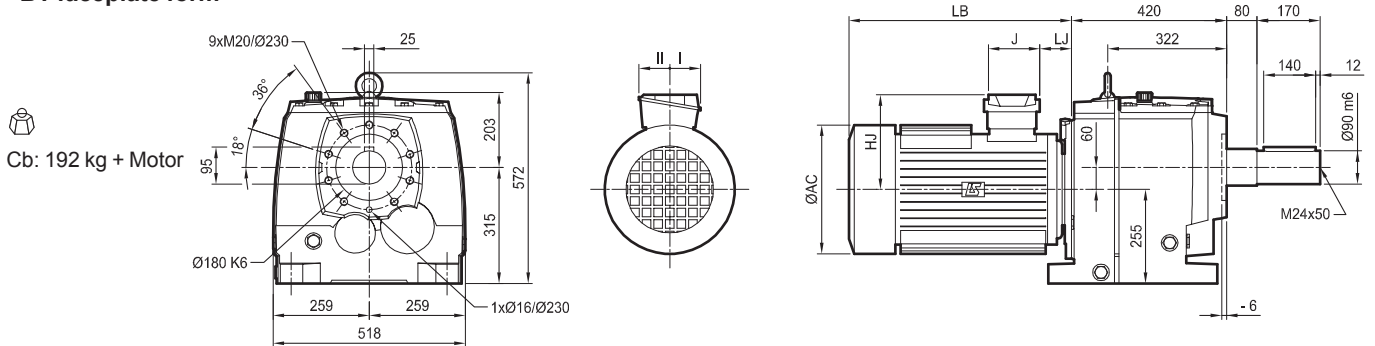
Compabloc 3000

Dimensions

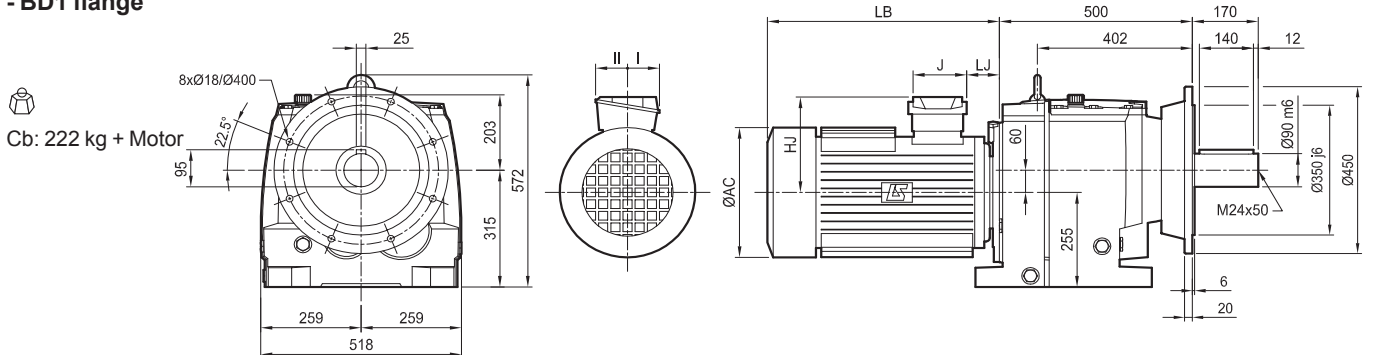
Dimensions of Compabloc (Cb) gearboxes, MI integral mounting,
Cb 3733

Dimensions in millimetres

- BT faceplate form



- BD1 flange



Electromechanical products


Compabloc 3000

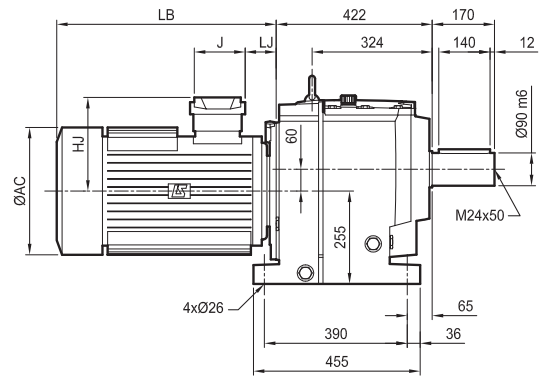
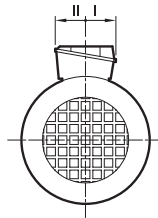
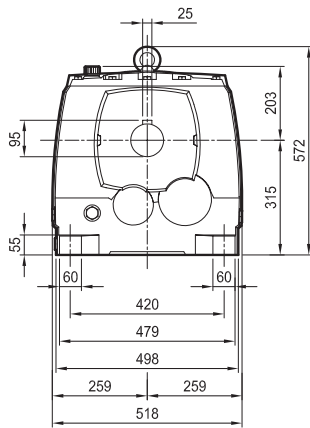
Dimensions

Dimensions of Compabloc (Cb) gearboxes, MI integral mounting,
Cb 3733


Dimensions in millimetres

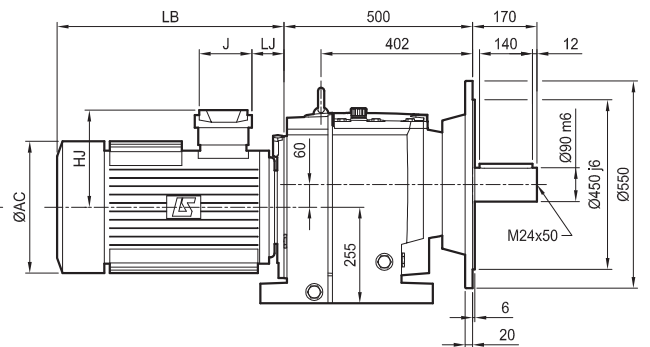
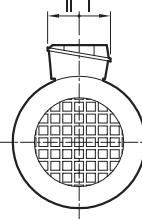
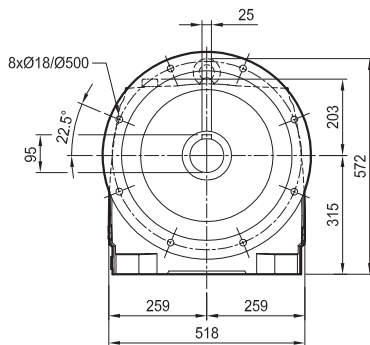
- S foot mounted




 Cb: 192 kg + Motor






- Standard BS flange

 Cb: 228 kg + Motor



Fr. size	4-pole motors																								
	LSES								LSES FCR								LSES FCPL								
	AC	HJ	J	LB	LJ	I	II		AC	HJ	J	LB	LJ	I	II		AC	HJ	J	LB	LJ	I	II		
LSES 90 L	190	135	86	272	53	43	43	15.2	190	156	160	331.5	48.5	55	55	24.2	-	-	-	-	-	-	-	-	-
LSES 100 LR	200	140	86	336.5	54	43	43	25.7	200	161	160	394.5	52	55	55	30	-	-	-	-	-	-	-	-	-
LSES 112 MU	235	149	86	353	55.5	43	43	35	235	169	160	421	51	55	55	44.5	-	-	-	-	-	-	-	-	-
LSES 132 MU	265	190	126	446	51	63	63	68	280	188	160	527	66.5	55	55	80	-	-	-	-	-	-	-	-	-
LSES 160 L	312	222	126	490	42.8	63	63	91	316	231	160	564	58	55	55	110	345	235	134	672	47.8	92	63	140	
LSES 180 LR	312	248	186	515	49.8	112	98	115	-	-	-	-	-	-	-	-	345	235	134	678	39	92	63	150	
LSES 200 LR	350	256	186	609	58.5	112	98	164	-	-	-	-	-	-	-	-	384	256	186	774	84.5	111	98	240	
LSES 225 MR	390	310	231	674	59.5	119	142	235	-	-	-	-	-	-	-	-	410	276	186	837	82	111	98	320	

Fr. size	4-pole motors																								
	LS FCR								LS FCPL																
	AC	HJ	J	LB	LJ	I	II		AC	HJ	J	LB	LJ	I	II		AC	HJ	J	LB	LJ	I	II		
LS 90 L	190	156	160	331.5	48.5	55	55	24.2	-	-	-	-	-	-	-	-	-	-	-	-	-	-	-	-	-
LS 100 L	200	161	160	382	52	55	55	30	-	-	-	-	-	-	-	-	-	-	-	-	-	-	-	-	-
LS 112 MG	235	169	160	421	51	55	55	44.5	-	-	-	-	-	-	-	-	-	-	-	-	-	-	-	-	-
LS 132 M	280	188	160	527	66.5	55	55	80	-	-	-	-	-	-	-	-	-	-	-	-	-	-	-	-	-
LS 160 L	316	231	160	564	58	55	55	110	345	235	134	672	47.8	92	63	140	345	235	134	678	39	92	63	150	
LS 180 LR	-	-	-	-	-	-	-	-	345	235	134	678	39	92	63	150	345	235	134	678	39	92	63	150	150
LS 200 LT	-	-	-	-	-	-	-	-	384	256	186	774	84.5	111	98	240	384	256	186	774	84.5	111	98	240	240
LS 225 MR	-	-	-	-	-	-	-	-	410	276	186	837	82	111	98	320	410	276	186	837	82	111	98	320	320

Electromechanical products

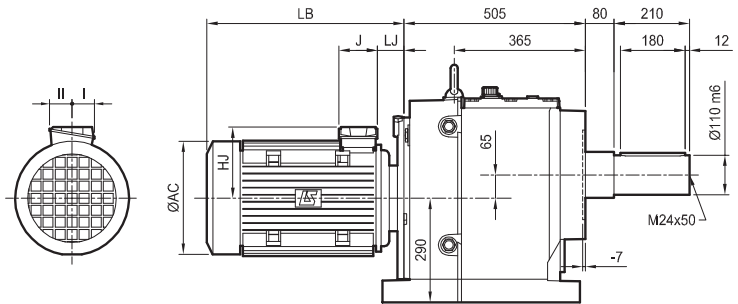
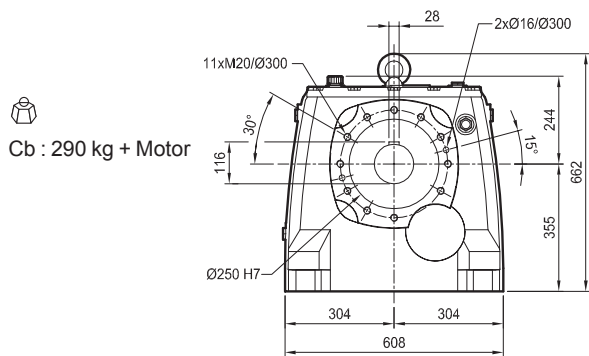
Compabloc 3000

Dimensions

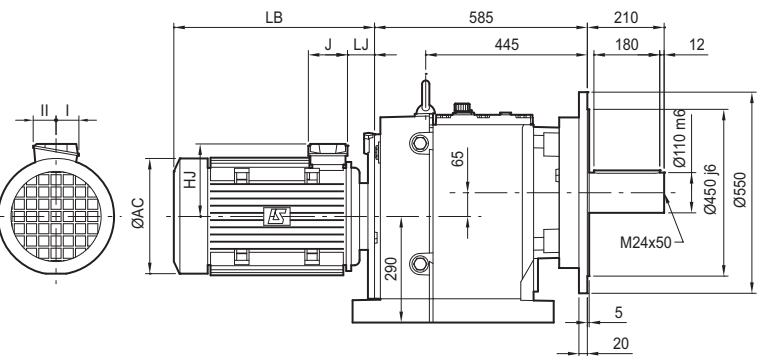
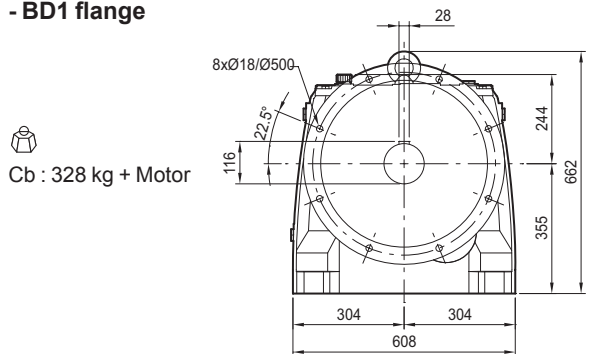
Dimensions of Compabloc (Cb) gearboxes, MI integral mounting,
Cb 3833

Dimensions in millimetres

- BT faceplate form



- BD1 flange



Electromechanical products

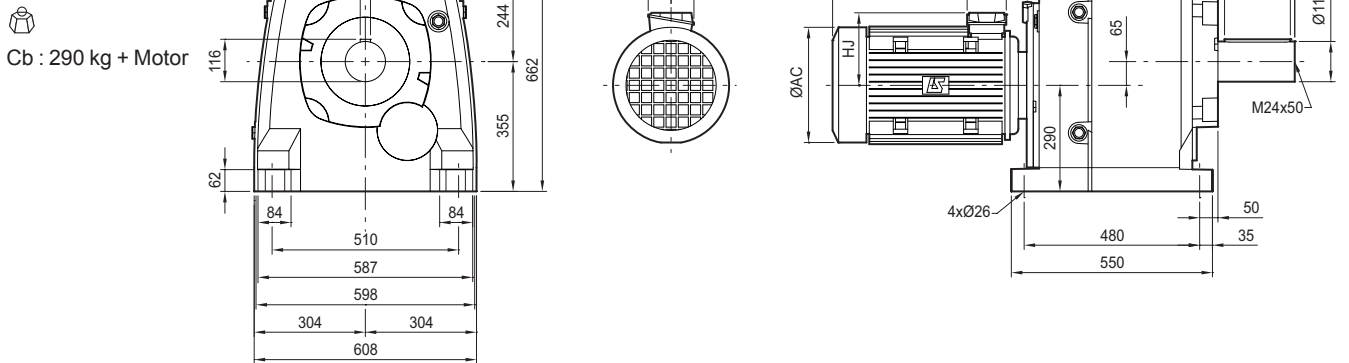
Compabloc 3000

Dimensions

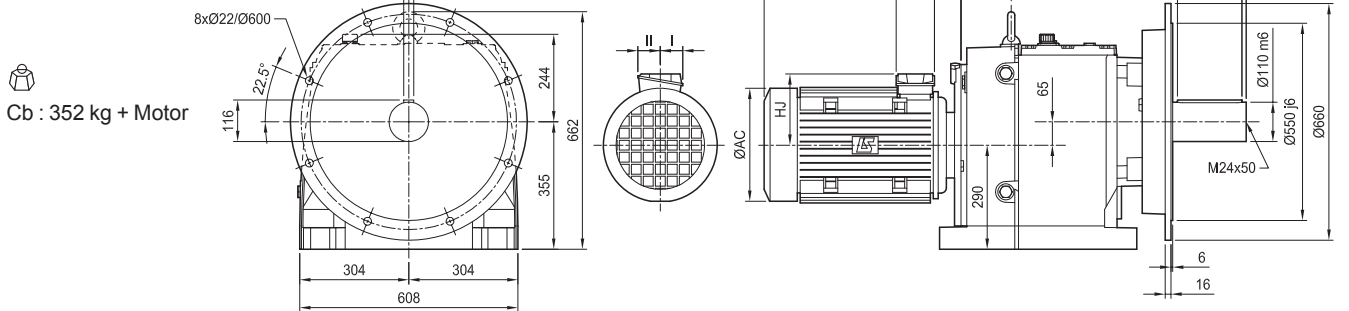
Dimensions of Compabloc (Cb) gearboxes, MI integral mounting,
Cb 3833

Dimensions in millimetres

- S foot mounted



- Standard BS flange



Fr. size	LSES								4-pole motors								LSES FCPL							
	AC	HJ	J	LB	LJ	I	II	kg	AC	HJ	J	LB	LJ	I	II	kg	AC	HJ	J	LB	LJ	I	II	kg
LSES 132 MU	265	190	126	433	38	63	63	68	280	186	160	514	53.5	55	55	80	-	-	-	-	-	-	-	-
LSES 160	312	222	126	477	29.8	63	63	91	316	196	160	551	45	55	55	110	345	235	134	659	34.8	92	63	140
LSES 180 LR	312	248	186	502	36.8	112	98	115	-	-	-	-	-	-	-	-	345	235	134	665	26	92	63	150
LSES 200 LR	350	256	186	596	45.5	112	98	164	-	-	-	-	-	-	-	-	384	256	186	761	71.5	111	98	240
LSES 225 MR	390	310	231	661	46.5	119	142	235	-	-	-	-	-	-	-	-	410	276	186	824	69	111	98	320

Fr. size	4-pole motors								LS FCPL															
	LS FCR				LS FCPL				AC	HJ	J	LB	LJ	I	II	kg								
LS 132 M	280	186	160	514	53.5	55	55	80	-	-	-	-	-	-	-	-	-	-	-	-	-	-	-	-
LS 160 L	316	196	160	551	45	55	55	110	345	235	134	659	34.8	92	63	140	-	-	-	-	-	-	-	-
LS 180 LR	-	-	-	-	-	-	-	-	345	235	134	665	26	92	63	150	-	-	-	-	-	-	-	-
LS 200 LT	-	-	-	-	-	-	-	-	384	256	186	761	71.5	111	98	240	-	-	-	-	-	-	-	-
LS 225 MR	-	-	-	-	-	-	-	-	410	276	186	824	69	111	98	320	-	-	-	-	-	-	-	-

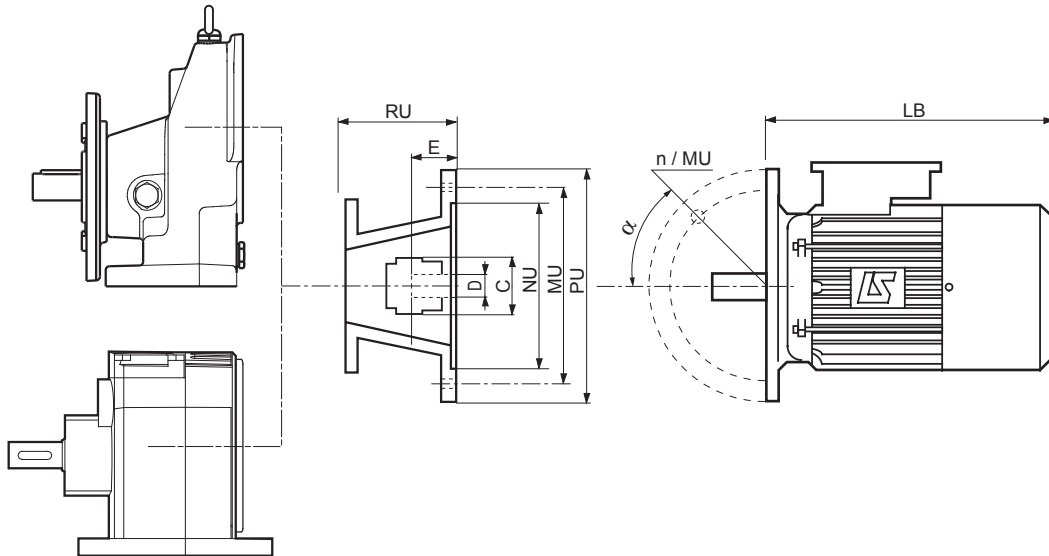
Electromechanical products

Compabloc 3000

Dimensions

Dimensions of Compabloc (Cb) gearboxes, MU universal mounting

Dimensions in millimetres



Type	LS, LSES IM 3001 (IM B5) IEC									U-mounts																		
	Ø D	E	LB ¹ /LB ²	LB FMC/FCR/FCPL	Ø MU	Ø NU	Ø PU	n	α°	Cb 15--		Cb 30--		Cb 31--		Cb 32--		Cb 33--		Cb 34--		Cb 35--		Cb 36/37--		Cb 38--		
										Ø C	RU	Ø C	RU ³	Ø C	RU ³	Ø C	RU ³	Ø C	RU	Ø C	RU	Ø C	RU	Ø C	RU	Ø C	RU	Ø C
LS56M	9j6	20	156/134	206/-/-	FF100	80	120	4	45	-	50	-	-	-	-	-	-	-	-	-	-	-	-	-	-	-	-	-
LS63M	11j6	23	172/165	222/-/-	FF115	95	140	4	45	-	50	-	60	-	-	-	-	-	-	-	-	-	-	-	-	-	-	-
LS71L	14j6	30	183	233/271/-	FF130	110	160	4	45	-	50	-	60/73	65/-	122/72	65/-	122/72	65	122	65	122	-	-	-	-	-	-	-
LSES80LG	19j6	40	247	-/292/-	FF165	130	200	4	45	-	-	-	90/73	65/-	130/83	65/-	130/83	65	130	65	130	65	121	-	-	-	-	-
LSES90L	24j6	50	265	-/324/-	FF165	130	200	4	45	-	-	-	-	65/-	130/83	65/-	130/83	65	130	65	130	65	121	-	-	-	-	-
LSES100LR	28j6	60	309	-/388/-	FF215	180	250	4	45	-	-	-	-	65/-	144/92	65/-	144/92	65	144	65	144	65	135	65	148	65	136	-
LSES112 MU	28j6	60	333	-/425/-	FF215	180	250	4	45	-	-	-	-	65/-	144/92	65/-	144/92	65	144	65	144	65	135	65	148	65	136	-
LSES132MU	38k6	80	412	-/532/-	FF265	230	300	4	45	-	-	-	-	-	-	-	-	65	162	65	169	65	157.5	65	167	65	156	-
LSES160L	42k6	110	495	-/567/668	FF300	250	350	4	45	-	-	-	-	-	-	-	-	-	-	95	194	95	183	95	199	95	187	-
LSES180LR	48k6	110	520	-/683	FF300	250	350	4	45	-	-	-	-	-	-	-	-	-	-	95	194	95	183	95	199	95	187	-
LSES200LR	55m6	110	620	-/828	FF350	300	400	4	45	-	-	-	-	-	-	-	-	-	-	95	194	95	183	95	199	95	187	-
LSES225' MR	60m6	140	676	-/953	FF400	350	450	8	22.5	-	-	-	-	-	-	-	-	-	-	-	-	-	-	-	120	311	120	233
LSES250' ME	65m6	140	810	-/1180	FF500	450	550	8	22.5	-	-	-	-	-	-	-	-	-	-	-	-	-	-	-	120	328	160	316
LSES280' MD	75m6	140	870	-/1246	FF500	450	550	8	22.5	-	-	-	-	-	-	-	-	-	-	-	-	-	-	-	120	328	160	316
LSES315' SP	80m6	170	947	-/NC ²	FF600	550	660	8	22.5	-	-	-	-	-	-	-	-	-	-	-	-	-	-	-	-	-	200	366

LB¹: ventilated motor - LB²: non-ventilated motor

1. Horizontally mounted foot and flange mounted motors (B35). Provision of a motor support is recommended.

2. NC: consult Leroy-Somer

3. RU: MU / MU new 2012

	Cb									
	15--	30--	31--	32--	33--	34--	35--	36--	37--	38--
MU max (kg)	0.6	3	4	8	14	20	35	75	75	117
LS max (kg)	10	30	65	70	120	150	205	350	350	350

Electromechanical products

Compabloc 3000

Notes

Electromechanical products

Compabloc 3000

Notes

International network

www.leroy-somer.com

ALGERIA
MOTEURS LEROY-SOMER
INTERNATIONAL DIVISION (FRANCE)

AUSTRALIA
LEROY-SOMER PTY LTD

AUSTRIA
LEROY-SOMER MARBAISE GMBH (GERMANY)

BELGIUM
LEROY-SOMER SA

BRAZIL
LEROY-SOMER DIVISION
EMERSON ELECTRIC DO BRASIL LTDA.

CANADA
LEROY-SOMER / CIM

CHINA
EMERSON TRADING (SHANGHAI) CO LTD

CZECH REPUBLIC
M.L.S. HOLICE SPOL SRO

DENMARK
LEROY SOMER DANMARK A/S

EGYPT
MOTEURS LEROY-SOMER
INTERNATIONAL DIVISION (FRANCE)

FRANCE
MOTEURS LEROY-SOMER

GERMANY
LEROY SOMER MARBAISE GMBH

GREECE
LEROY SOMER LTD

HUNGARY
IMI kft

INDIA
LEROY-SOMER DIVISION
EMERSON ELECTRIC CO

ITALY
LEROY SOMER SPA

JAPAN
LEROY-SOMER DIVISION
EMERSON JAPAN LTD

KOREA
LEROY-SOMER DIVISION
EMERSON ELECTRIC (KOREA) LTD

NETHERLANDS
LEROY-SOMER BV

POLAND
FZN MARBAISE LS SP ZOO

ROMANIA
LEROY-SOMER DIVISION
EMERSON SRL

RUSSIA
LEROY-SOMER DIVISION
EMERSON LLC

SINGAPORE
LEROY-SOMER SOUTHEAST ASIA PTE LTD

SOUTH AFRICA
LEROY SOMER PTY LTD

SPAIN
LEROY SOMER IBERICA S.A.

SWEDEN
LEROY-SOMER NORDEN AB

SWITZERLAND
LEROY-SOMER SA

TAIWAN
MOTEURS LEROY-SOMER (FRANCE)
LIAISON OFFICE - C/O EMERSON (TAIWAN) CO LTD

THAILAND
LEROY-SOMER DIVISION
EMERSON (THAILAND) LTD

TURKEY
LEROY-SOMER ELEKTROMEKANIK SISTEMLER
TICARET LTD STI

U.A.E.
LEROY-SOMER DIVISION
EMERSON FZE

UNITED KINGDOM
LEROY SOMER LTD

USA
LEROY-SOMER POWER AND DRIVES
EMERSON ELECTRIC CO

VENEZUELA
LEROY-SOMER DIVISION
EMERSON VENEZUELA CA



**LERROY
SOMER**

EMERSON
Industrial Automation

Leroy-Somer reserves the right to modify the characteristics of its products at any time in order to incorporate the latest technological developments.
The information contained in this document may therefore be changed without prior notice.

Moteurs Leroy-Somer SAS - RCS 338 567 258 ANGOULÊME - Capital de 65 800 512 €